

G1/8 - 3/2-Way Valves - Series K9

Actuation:

- Rotary lever, indexed
- Rotary lever, spring return
- Rotary lever, indexed, secured in two positions
- Pushbutton
- Cam operation
- Toggle cam operation
- Plunger operated
- Cam operated, free cam left or free cam right
- Pivoted lever
- Pedal
- Actuators for panel mounting



Operating information

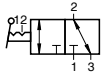
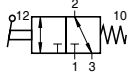
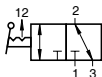
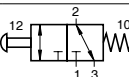
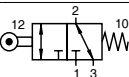
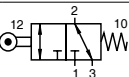
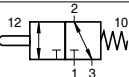
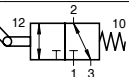
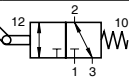
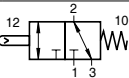
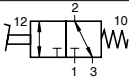
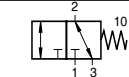


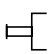
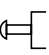


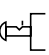
System	Poppet Valve	Pneumatic Characteristics	
Mounting	2 Screws M4		
Tube connection	Thread	Nominal pressure	6 bar
Port size	G1/8	Operating pressure range	0 – 10 bar
Installation	In any position	Nominal flow	220 l/min
Ambient temperature range	-10 °C to +55 °C	Flow direction	1 → 2 normally closed 3 → 2 normally open
Medium temperature range	+5 °C* to +60 °C	Actuation	Manual, mechanical and pedal actuated
	Note: Please consult us for operating temperatures below 0° C	Actuation	
Medium	Filtered and lubricated or filtered and unlubricated air	Stroke	1.5 – 3 mm
Lubrication	None or oil mist lubrication	* -10°C when using dry compressed air	

Actuation Forces, Rotation Angles and Weight

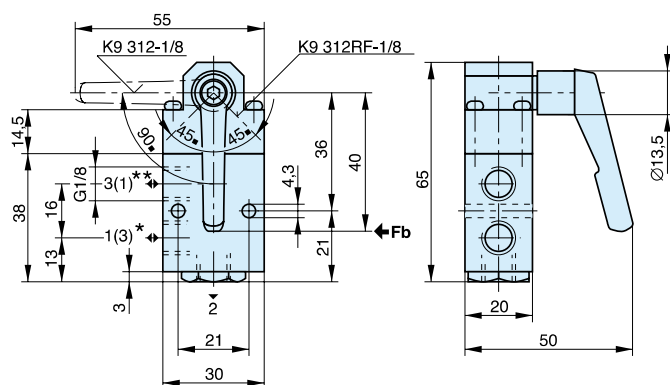
Description	Type	Actuation force (N)	Rotation angle	Weight mass (kg)
Rotary lever, indexed	K9 312-1/8	4.5	±45°, 90°	0.110
Rotary lever, spring return	K9 312RF-1/8	4.5	±45°, 90°	0.110
Rotary lever, indexed secured in both positions	K9 312S-1/8	4.5	±45°, 90°	0.110
Pushbutton	K9 314RF-1/8	25	–	0.075
Cam operation	K9 321RF-1/8	11	–	0.070
Toggle cam operation	K9 324RF-1/8	5	±40°	0.120
Plunger operated	K9 323RF-1/8	32	–	0.050
Cam operated free cam left	K9 325RF-1/8	5	±40°	0.120
Cam operated free cam right	K9 326RF-1/8	5	±40°	0.120
Pivoted lever	K9 329RF-1/8	2*	±40°	0.115
Pedal	K9 331RF-1/8	12	–	0.800
Basic valve for panel mounting actuators	K9 390RF-1/8	35	–	0.060

* at a distance of 100 mm from fulcrum

Order Instructions – 3/2 Way Poppet Valves, Series K9

Actuation	Symbol	Mounting Ø (mm)	Order Instructions Type	Order code
Rotary lever, indexed			K9 312-1/8	PA 10269
Rotary lever, spring return			K9 312RF-1/8	PA 10270
Rotary lever, indexed secured in both positions			K9 312S-1/8	PA 10349
Pushbutton			K9 314RF-1/8	PA 10271
Cam operation			K9 321RF-1/8	PA 10272
Toggle cam operation			K9 324RF-1/8	PA 10273
Plunger operated			K9 323RF-1/8	PA 10235
Cam operated free cam left			K9 325RF-1/8	PA 10274
Cam operated free cam right			K9 326RF-1/8	PA 10275
Pivoted lever			K9 329RF-1/8	PA 10276
Pedal			K9 331RF-1/8	PA 10277
Panel mounting valve with adaptor for interchangeable actuation			K9 390RF-1/8	PA 10278
Rotary lever, indexed		22 30	12T-22 12T-30	KX 9355 KX 9314
Rotary lever, spring return		22 30	12T-RF-22 12T-RF-30	KX 9356 KX 9315
Pushbutton		22 30	13T-RF-22 13T-RF-30	KX 9357 KX 9316
Mushroom pushbutton		22 30	15T-RF-22 15T-RF-30	KX 9358 KX 9317
Locking switch		22 30	16T-22 16T-30	KX 9359 KX 9318
Rotary switch		22 30	17T-22 17T-30	KX 9360 KX 9319
Mushroom switch Emergency Shutdown		22 30	18T-22 18T-30	KX 9361 KX 9320

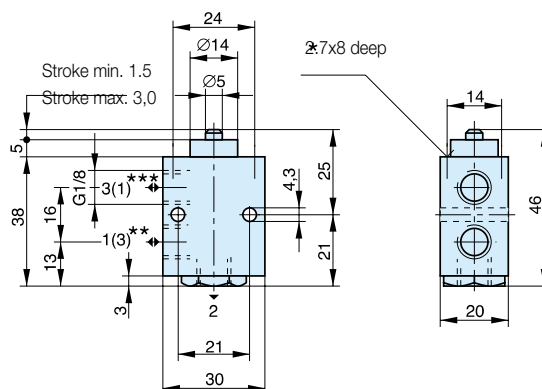
Rotary Lever – Type: K9 312..-1/8



* = P when used as “normally closed”

** = P when used as “normally open”

Plunger Operated – Type: K9 323RF-1/8

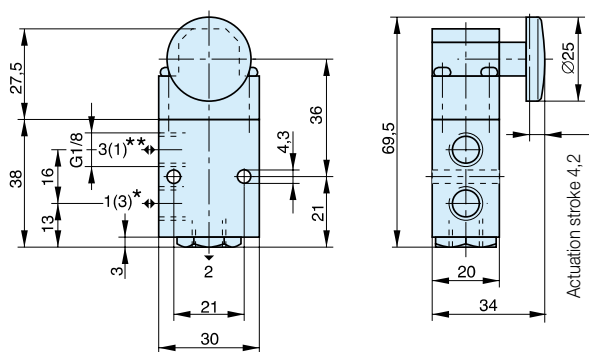


* Self tapping screws CM 3x.. DIN 7500 to be used

** = P when used as “normally closed”

*** = P when used as “normally open”

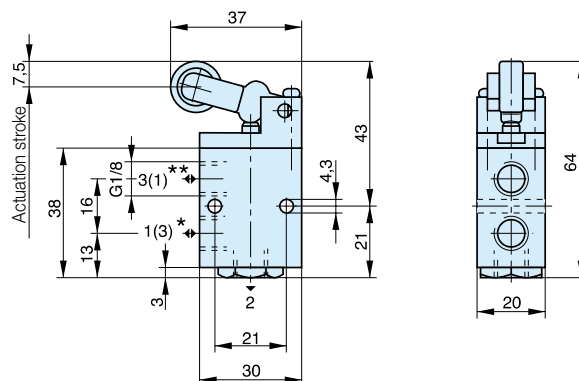
Pushbutton – Type: K9 314RF-1/8



* = P when used as “normally closed”

** = P when used as “normally open”

Cam operation– Type: K9 321RF-1/8

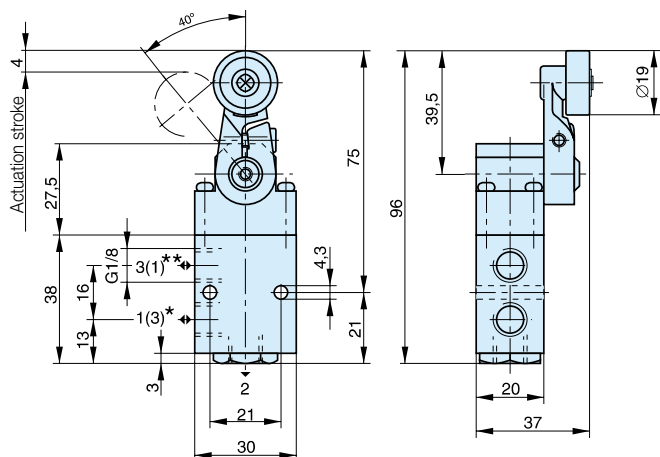


* = P when used as “normally closed”

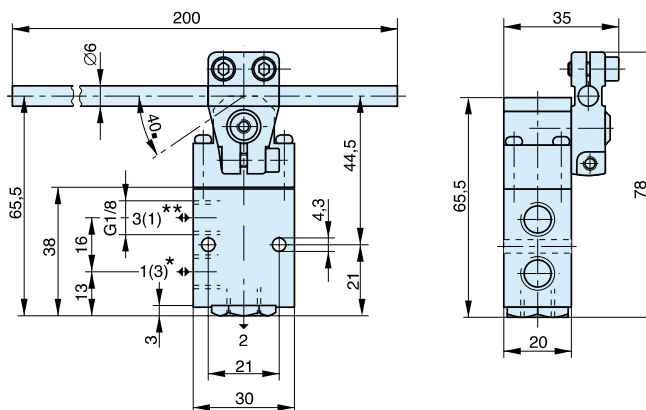
** = P when used as “normally open”

Toggle Cam Operation – Type: K9 324RF-1/8

Pivoted Lever – Type: K9 329RF-1/8



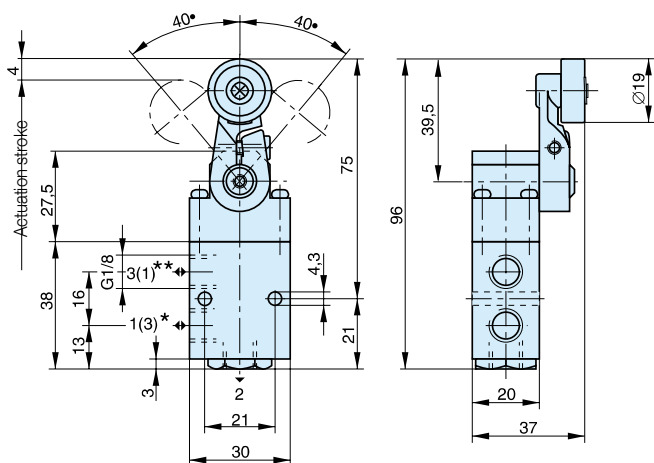
* = P when used as "normally closed"
 ** = P when used as "normally open"



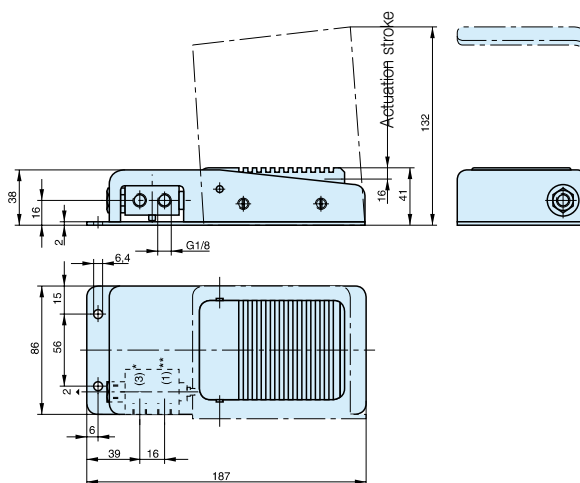
* = P when used as "normally closed"
 ** = P when used as "normally open"

Cam Operated free cam left / right
Type: K9 325RF-1/8, K9 326RF-1/8

Pedal – Type: K9 331RF-1/8

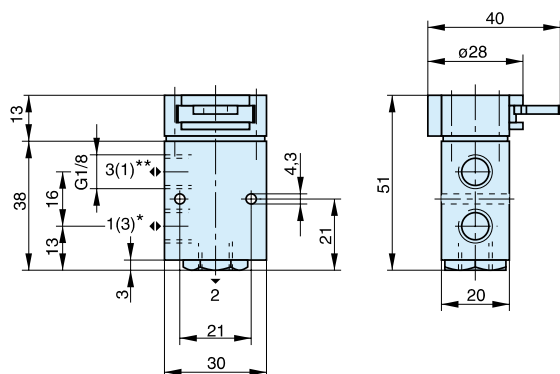


* = P when used as "normally closed"
 ** = P when used as "normally open"



* = P when used as "normally closed"
 ** = P when used as "normally open"

Basic Valve with adaptor for panel mounting Type: K9 390RF-1/8



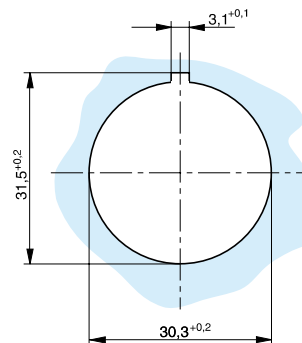
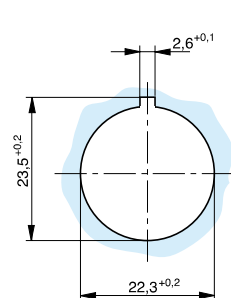
* = P when used as "normally closed"

** = P when used as "normally open"

Mounting holes for mounting diameters 22 and 30 mm

Mounting diameter Ø22 mm

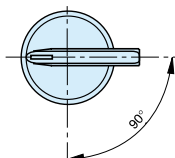
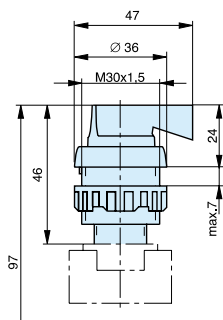
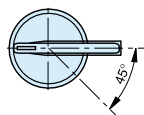
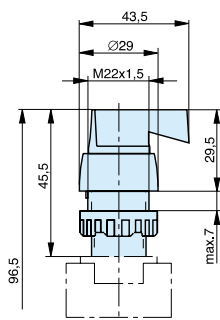
Mounting diameter Ø30 mm



Rotary Lever, indexed – Type: 12T-22, 12T-30

Mounting diameter Ø22 mm

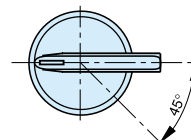
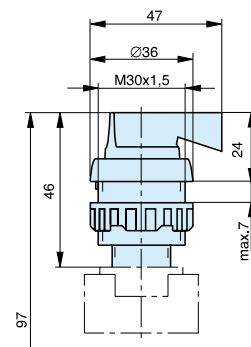
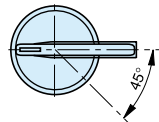
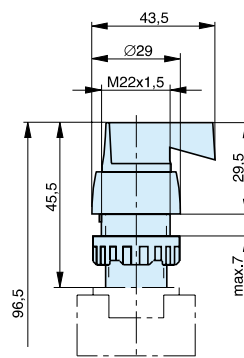
Mounting diameter Ø30 mm



Rotary Lever with spring return Type: 12T-RF-22, 12T-RF-30

Mounting diameter Ø22 mm

Mounting diameter Ø30 mm

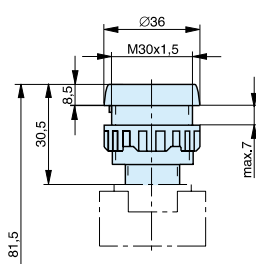
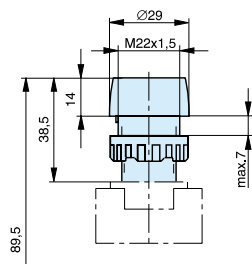


Pushbutton

Type: 13T-RF-22, 13T-RF-30

Mounting diameter Ø22 mm

Mounting diameter Ø30 mm

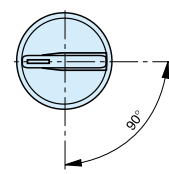
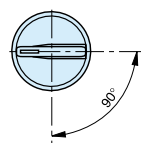
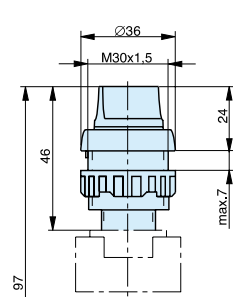
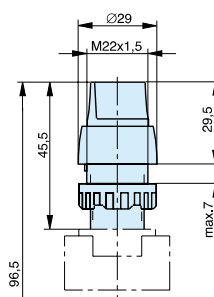


Rotary Switch

Type: 17T-22, 17T-30

Mounting diameter Ø22 mm

Mounting diameter Ø30 mm

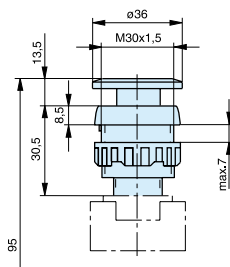
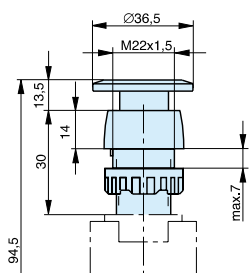


Mushroom Pushbutton

Type: 15T-RF-22, 15T-RF-30

Mounting diameter Ø22 mm

Mounting diameter Ø30 mm

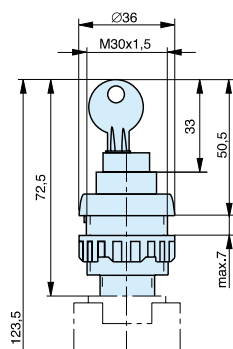
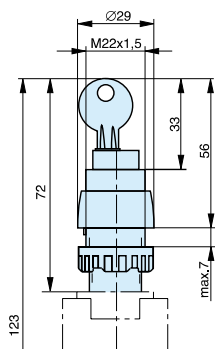


Locking Switch

Type: 16T-22, 16T-30

Mounting diameter Ø22 mm

Mounting diameter Ø30 mm



Mushroom Switch (Emergency Shutdown)

Type: 18T-22, 18T-30

Mounting diameter Ø22 mm

Mounting diameter Ø30 mm

