

# P1P Short Build Compact Cylinders

According to ISO 21287



The P1P Series is a complete range of ISO 21287 compact cylinders developed to meet the highest requirements for quality and performance. The careful design in every detail provides first class function and service life properties.

Reliability and long service life are key qualities of any pneumatic cylinder. Therefore we have given P1P highest possible quality in every detail based on our 40 years of experience and extensive testing. The design is based on the following important principles.

- **Proven seal design and materials throughout the cylinder. The expertise for seal technology within Parker Hannifin is the basis for leading and proven tribology solutions for all our pneumatic actuators.**
- **Body extrusion in anodised aluminium with extra fine and hard internal surface for optimum operational conditions.**
- **End covers and body extrusion with external anodisation for excellent corrosion resistance.**
- **Stainless steel piston rod for versatile use in corrosive environment.**

## Double acting

The versatile high quality ISO compact cylinder range, P1P cylinders are up to 50% shorter than ISO15552 cylinders for the same stroke. Suitable for a wide range of applications.

## Double acting - Guided

This cylinder version feature twin guide rods connected to the piston rod by a large flange plate. These cylinders are ideal for clamping an moving applications where turning of the piston rod must be avoided.

- Bore 20 - 100 mm
- ISO 21287 conformity
- Corrosion resistant design and low weight construction
- Magnetic piston as standard
- Elastic cushioning
- Flexible direct mounting
- ISO 15552 mountings and global sensor range common with P1D



### Operating information

Working pressure:	Max 10 bar
Permissible fluid:	Air, with or without lubrication
Seals / Temperature options	
Standard:	-20°C to +80°C
High temperature:	-10°C to +120°C
Low temperature:	-40°C to +80°C
Prelubricated, further lubrication is not normally necessary. If additional lubrication is introduced it must be continued.	
For more information see <a href="http://www.parker.com/euro_pneumatic">www.parker.com/euro_pneumatic</a>	

### \* Double acting - Guided order code.

Place **G** in position **4** of the order code

Example: P1P**G**020DS7G0025

## Double acting - Female threaded piston rod

### Ø20mm - (M5)

Stroke mm	Order code
5	P1PS020DS7G0005
10	P1PS020DS7G0010
15	P1PS020DS7G0015
20	P1PS020DS7G0020
25	P1PS020DS7G0025
30	P1PS020DS7G0030
40	P1PS020DS7G0040
50	P1PS020DS7G0050
60	P1PS020DS7G0060

### Ø25mm - (M5)

Stroke mm	Order code
5	P1PS025DS7G0005
10	P1PS025DS7G0010
15	P1PS025DS7G0015
20	P1PS025DS7G0020
25	P1PS025DS7G0025
30	P1PS025DS7G0030
40	P1PS025DS7G0040
50	P1PS025DS7G0050
60	P1PS025DS7G0060

### Ø32mm - (G1/8)

Stroke mm	Order code
5	P1PS032DS7G0005
10	P1PS032DS7G0010
15	P1PS032DS7G0015
20	P1PS032DS7G0020
25	P1PS032DS7G0025
30	P1PS032DS7G0030
40	P1PS032DS7G0040
50	P1PS032DS7G0050
60	P1PS032DS7G0060
80	P1PS032DS7G0080

### Ø40mm - (G1/8)

Stroke mm	Order code
5	P1PS040DS7G0005
10	P1PS040DS7G0010
15	P1PS040DS7G0015
20	P1PS040DS7G0020
25	P1PS040DS7G0025
30	P1PS040DS7G0030
40	P1PS040DS7G0040
50	P1PS040DS7G0050
60	P1PS040DS7G0060
80	P1PS040DS7G0080

### Ø50mm - (G1/8)

Stroke mm	Order code
5	P1PS050DS7G0005
10	P1PS050DS7G0010
15	P1PS050DS7G0015
20	P1PS050DS7G0020
25	P1PS050DS7G0025
30	P1PS050DS7G0030
40	P1PS050DS7G0040
50	P1PS050DS7G0050
60	P1PS050DS7G0060
80	P1PS050DS7G0080

### Ø63mm - (G1/8)

Stroke mm	Order code
5	P1PS063DS7G0005
10	P1PS063DS7G0010
15	P1PS063DS7G0015
20	P1PS063DS7G0020
25	P1PS063DS7G0025
30	P1PS063DS7G0030
40	P1PS063DS7G0040
50	P1PS063DS7G0050
60	P1PS063DS7G0060
80	P1PS063DS7G0080

### Ø80mm - (G1/8)

Stroke mm	Order code
5	P1PS080DS7G0005
10	P1PS080DS7G0010
15	P1PS080DS7G0015
20	P1PS080DS7G0020
25	P1PS080DS7G0025
30	P1PS080DS7G0030
40	P1PS080DS7G0040
50	P1PS080DS7G0050
60	P1PS080DS7G0060
80	P1PS080DS7G0080
100	P1PS080DS7G0100

### Ø100mm - (G1/8)

Stroke mm	Order code
10	P1PS100DS7G0010
15	P1PS100DS7G0015
20	P1PS100DS7G0020
25	P1PS100DS7G0025
30	P1PS100DS7G0030
40	P1PS100DS7G0040
50	P1PS100DS7G0050
60	P1PS100DS7G0060
80	P1PS100DS7G0080
100	P1PS100DS7G0100

### Sensors



For sensors see page 77.

## Double acting

The versatile high quality ISO compact cylinder range, P1P cylinders are up to 50% shorter than ISO15552 cylinders for the same stroke. Suitable for a wide range of applications.

- Bore 20 - 100 mm
- ISO 21287 conformity
- Corrosion resistant design and low weight construction
- Magnetic piston as standard
- Elastic cushioning
- Flexible direct mounting
- ISO 15552 mountings and global sensor range common with P1D



## Double acting - Male threaded piston rod

### Ø20mm - (M5)

Stroke mm	Order code
5	P1PS020DS8G0005
10	P1PS020DS8G0010
15	P1PS020DS8G0015
20	P1PS020DS8G0020
25	P1PS020DS8G0025
30	P1PS020DS8G0030
40	P1PS020DS8G0040
50	P1PS020DS8G0050
60	P1PS020DS8G0060

### Ø25mm - (M5)

Stroke mm	Order code
5	P1PS025DS8G0005
10	P1PS025DS8G0010
15	P1PS025DS8G0015
20	P1PS025DS8G0020
25	P1PS025DS8G0025
30	P1PS025DS8G0030
40	P1PS025DS8G0040
50	P1PS025DS8G0050
60	P1PS025DS8G0060

### Ø32mm - (G1/8)

Stroke mm	Order code
5	P1PS032DS8G0005
10	P1PS032DS8G0010
15	P1PS032DS8G0015
20	P1PS032DS8G0020
25	P1PS032DS8G0025
30	P1PS032DS8G0030
40	P1PS032DS8G0040
50	P1PS032DS8G0050
60	P1PS032DS8G0060
80	P1PS032DS8G0080

### Ø40mm - (G1/8)

Stroke mm	Order code
5	P1PS040DS8G0005
10	P1PS040DS8G0010
15	P1PS040DS8G0015
20	P1PS040DS8G0020
25	P1PS040DS8G0025
30	P1PS040DS8G0030
40	P1PS040DS8G0040
50	P1PS040DS8G0050
60	P1PS040DS8G0060
80	P1PS040DS8G0080

### Ø50mm - (G1/8)

Stroke mm	Order code
5	P1PS050DS8G0005
10	P1PS050DS8G0010
15	P1PS050DS8G0015
20	P1PS050DS8G0020
25	P1PS050DS8G0025
30	P1PS050DS8G0030
40	P1PS050DS8G0040
50	P1PS050DS8G0050
60	P1PS050DS8G0060
80	P1PS050DS8G0080

### Ø63mm - (G1/8)

Stroke mm	Order code
5	P1PS063DS8G0005
10	P1PS063DS8G0010
15	P1PS063DS8G0015
20	P1PS063DS8G0020
25	P1PS063DS8G0025
30	P1PS063DS8G0030
40	P1PS063DS8G0040
50	P1PS063DS8G0050
60	P1PS063DS8G0060
80	P1PS063DS8G0080

### Ø80mm - (G1/8)

Stroke mm	Order code
5	P1PS080DS8G0005
10	P1PS080DS8G0010
15	P1PS080DS8G0015
20	P1PS080DS8G0020
25	P1PS080DS8G0025
30	P1PS080DS8G0030
40	P1PS080DS8G0040
50	P1PS080DS8G0050
60	P1PS080DS8G0060
80	P1PS080DS8G0080
100	P1PS080DS8G0100

### Ø100mm - (G1/8)

Stroke mm	Order code
10	P1PS100DS8G0010
15	P1PS100DS8G0015
20	P1PS100DS8G0020
25	P1PS100DS8G0025
30	P1PS100DS8G0030
40	P1PS100DS8G0040
50	P1PS100DS8G0050
60	P1PS100DS8G0060
80	P1PS100DS8G0080
100	P1PS100DS8G0100

### Sensors



For sensors see page 77.

**Single acting**

Single acting P1P cylinders are available in bore sizes 20 - 63 mm and in two versions to suit a wide range of applications. Choose between the spring return (SS) and the spring extended (TS) versions.



**\* Spring return order code.**

Place **S** in position **8** of the order code

Example: P1PS020**S**S7G0025

**\* Spring extended order code.**

Place **T** in position **8** of the order code

Example: P1PS020**T**S7G0025

**Single acting - Female threaded piston rod**

**Ø20mm - (M5)**

Stroke mm	Order code
25	P1PS020 * S7G0025

**Ø25mm - (M5)**

Stroke mm	Order code
25	P1PS025 * S7G0025

**Ø32mm - (G1/8)**

Stroke mm	Order code
25	P1PS032 * S7G0025

**Ø40mm - (G1/8)**

Stroke mm	Order code
25	P1PS040 * S7G0025

**Ø50mm - (G1/8)**

Stroke mm	Order code
25	P1PS050 * S7G0025

**Ø63mm - (G1/8)**

Stroke mm	Order code
25	P1PS063 * S7G0025

**Double acting - Through piston rod**

The P1P through rod cylinder version is available in bore sizes 20 - 100 mm. This cylinder type is used in many ways e.g. in applications with higher lateral forces or when performing a movement on both sides of the cylinder.



**Double acting - Through piston rod - Female threaded piston rod**

**Ø20mm - (M5)**

Stroke mm	Order code
5	P1PS020KS7G0005
10	P1PS020KS7G0010
15	P1PS020KS7G0015
20	P1PS020KS7G0020
25	P1PS020KS7G0025
30	P1PS020KS7G0030
40	P1PS020KS7G0040
50	P1PS020KS7G0050
60	P1PS020KS7G0060

**Ø25mm - (M5)**

Stroke mm	Order code
5	P1PS025KS7G0005
10	P1PS025KS7G0010
15	P1PS025KS7G0015
20	P1PS025KS7G0020
25	P1PS025KS7G0025
30	P1PS025KS7G0030
40	P1PS025KS7G0040
50	P1PS025KS7G0050
60	P1PS025KS7G0060

**Ø32mm - (G1/8)**

Stroke mm	Order code
5	P1PS032KS7G0005
10	P1PS032KS7G0010
15	P1PS032KS7G0015
20	P1PS032KS7G0020
25	P1PS032KS7G0025
30	P1PS032KS7G0030
40	P1PS032KS7G0040
50	P1PS032KS7G0050
60	P1PS032KS7G0060
80	P1PS032KS7G0080

**Ø40mm - (G1/8)**

Stroke mm	Order code
5	P1PS040KS7G0005
10	P1PS040KS7G0010
15	P1PS040KS7G0015
20	P1PS040KS7G0020
25	P1PS040KS7G0025
30	P1PS040KS7G0030
40	P1PS040KS7G0040
50	P1PS040KS7G0050
60	P1PS040KS7G0060
80	P1PS040KS7G0080

**Ø50mm - (G1/8)**

Stroke mm	Order code
5	P1PS050KS7G0005
10	P1PS050KS7G0010
15	P1PS050KS7G0015
20	P1PS050KS7G0020
25	P1PS050KS7G0025
30	P1PS050KS7G0030
40	P1PS050KS7G0040
50	P1PS050KS7G0050
60	P1PS050KS7G0060
80	P1PS050KS7G0080

**Ø63mm - (G1/8)**

Stroke mm	Order code
5	P1PS063KS7G0005
10	P1PS063KS7G0010
15	P1PS063KS7G0015
20	P1PS063KS7G0020
25	P1PS063KS7G0025
30	P1PS063KS7G0030
40	P1PS063KS7G0040
50	P1PS063KS7G0050
60	P1PS063KS7G0060
80	P1PS063KS7G0080

**Ø80mm - (G1/8)**

Stroke mm	Order code
5	P1PS080KS7G0005
10	P1PS080KS7G0010
15	P1PS080KS7G0015
20	P1PS080KS7G0020
25	P1PS080KS7G0025
30	P1PS080KS7G0030
40	P1PS080KS7G0040
50	P1PS080KS7G0050
60	P1PS080KS7G0060
80	P1PS080KS7G0080
100	P1PS080KS7G0100

**Ø100mm - (G1/8)**

Stroke mm	Order code
10	P1PS100KS7G0010
15	P1PS100KS7G0015
20	P1PS100KS7G0020
25	P1PS100KS7G0025
30	P1PS100KS7G0030
40	P1PS100KS7G0040
50	P1PS100KS7G0050
60	P1PS100KS7G0060
80	P1PS100KS7G0080
100	P1PS100KS7G0100

**Sensors**



For sensors see page 77.



**Double acting - Low temperature**

This P1P cylinder version is developed for use in temperatures down to -40°C. It is available in bore sizes 20 - 100 mm. With the combination of compactness and corrosion resistance the P1P low temperature version can be used in many industries e.g. Bus, Truck and Rail applications.

**\* Low temperature order code.**

Place **L** in position **9** of the order code  
**Example:** P1PS020DL7G0005



**Double acting - High temperature**

Use this P1P cylinder version, available in bore sizes 20 - 100 mm, for high temperature applications with temperatures up to +120°C. The chemical resistance thanks to the design in anodised aluminium is an advantage in many high temperature applications.

**\* High temperature order code.**

Place **F** in position **9** of the order code  
**Example:** P1PS020DF7G0005



**Double acting - Female threaded piston rod**

**Ø20mm - (M5)**

Stroke mm	Order code
5	P1PS020D * 7G0005
10	P1PS020D * 7G0010
15	P1PS020D * 7G0015
20	P1PS020D * 7G0020
25	P1PS020D * 7G0025
30	P1PS020D * 7G0030
40	P1PS020D * 7G0040
50	P1PS020D * 7G0050
60	P1PS020D * 7G0060

**Ø25mm - (M5)**

Stroke mm	Order code
5	P1PS025D * 7G0005
10	P1PS025D * 7G0010
15	P1PS025D * 7G0015
20	P1PS025D * 7G0020
25	P1PS025D * 7G0025
30	P1PS025D * 7G0030
40	P1PS025D * 7G0040
50	P1PS025D * 7G0050
60	P1PS025D * 7G0060

**Ø32mm - (G1/8)**

Stroke mm	Order code
5	P1PS032D * 7G0005
10	P1PS032D * 7G0010
15	P1PS032D * 7G0015
20	P1PS032D * 7G0020
25	P1PS032D * 7G0025
30	P1PS032D * 7G0030
40	P1PS032D * 7G0040
50	P1PS032D * 7G0050
60	P1PS032D * 7G0060
80	P1PS032D * 7G0080

**Ø40mm - (G1/8)**

Stroke mm	Order code
5	P1PS040D * 7G0005
10	P1PS040D * 7G0010
15	P1PS040D * 7G0015
20	P1PS040D * 7G0020
25	P1PS040D * 7G0025
30	P1PS040D * 7G0030
40	P1PS040D * 7G0040
50	P1PS040D * 7G0050
60	P1PS040D * 7G0040
80	P1PS040D * 7G0050

**Ø50mm - (G1/8)**

Stroke mm	Order code
5	P1PS050D * 7G0005
10	P1PS050D * 7G0010
15	P1PS050D * 7G0015
20	P1PS050D * 7G0020
25	P1PS050D * 7G0025
30	P1PS050D * 7G0030
40	P1PS050D * 7G0040
50	P1PS050D * 7G0050
60	P1PS050D * 7G0060
80	P1PS050D * 7G0080

**Ø63mm - (G1/8)**

Stroke mm	Order code
5	P1PS063D * 7G0005
10	P1PS063D * 7G0010
15	P1PS063D * 7G0015
20	P1PS063D * 7G0020
25	P1PS063D * 7G0025
30	P1PS063D * 7G0030
40	P1PS063D * 7G0040
50	P1PS063D * 7G0050
60	P1PS063D * 7G0060
80	P1PS063D * 7G0080

**Ø80mm - (G1/8)**

Stroke mm	Order code
5	P1PS080D * 7G0005
10	P1PS080D * 7G0010
15	P1PS080D * 7G0015
20	P1PS080D * 7G0020
25	P1PS080D * 7G0025
30	P1PS080D * 7G0030
40	P1PS080D * 7G0040
50	P1PS080D * 7G0050
60	P1PS080D * 7G0060
80	P1PS080D * 7G0080
100	P1PS080D * 7G0100

**Ø100mm - (G1/8)**

Stroke mm	Order code
10	P1PS100D * 7G0010
15	P1PS100D * 7G0015
20	P1PS100D * 7G0020
25	P1PS100D * 7G0025
30	P1PS100D * 7G0030
40	P1PS100D * 7G0040
50	P1PS100D * 7G0050
60	P1PS100D * 7G0060
80	P1PS100D * 7G0080
100	P1PS100D * 7G0100

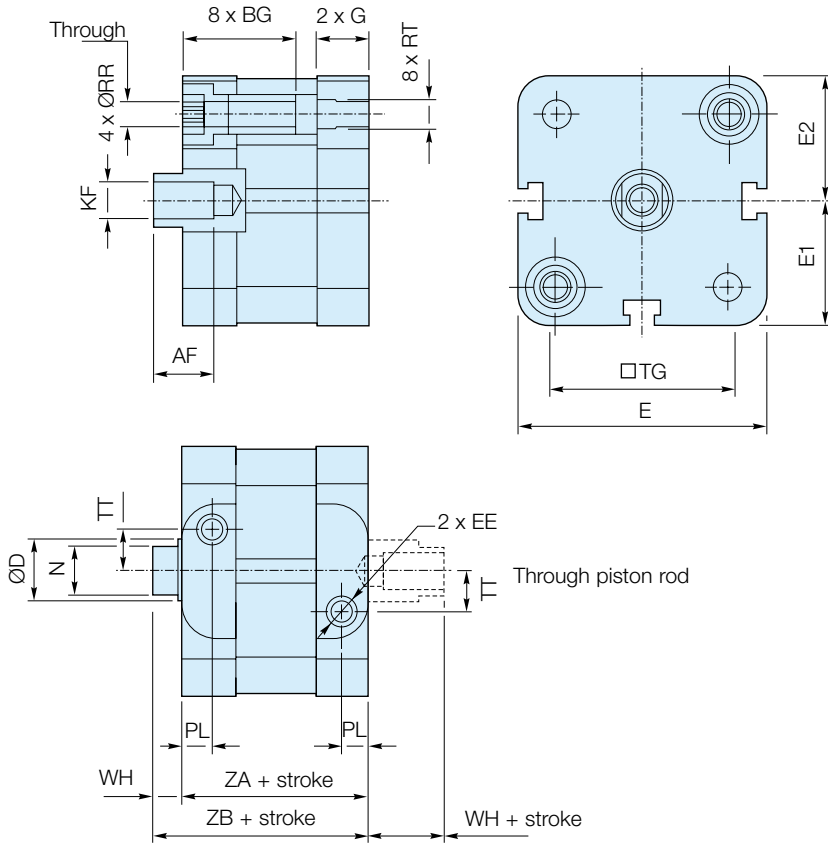
**Sensors**  
 Low temperature only



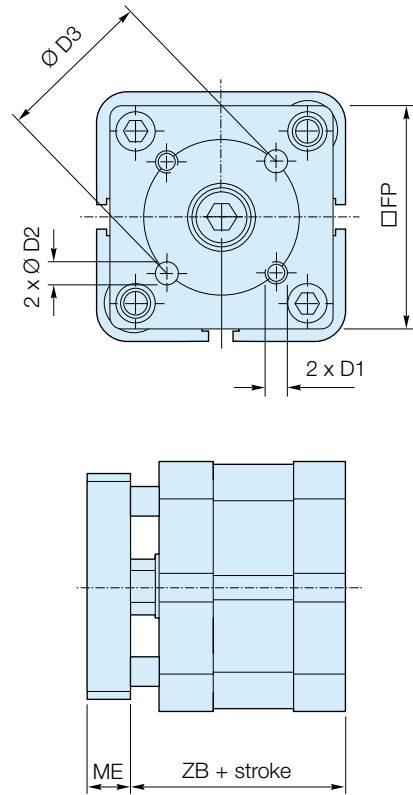
For sensors see page 77.

Dimensions - Bore 20 - 63mm

P1PS...DS7G Double acting with female piston rod thread

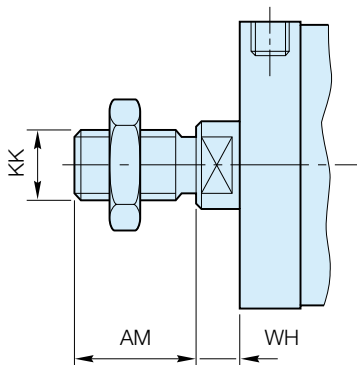


P1PG...DS Double acting with guided piston rod



Bore size	AF min	BG min	ØD	D1	ØD2 H8	ØD3	EE	E	E1	E2	FP	G	KF	ME	N h14	PL	ØRR min	RT	TG	TT	WH	ZA ± 0,3	ZB ± 0,6
Ø20	10	15	10	M4	4	17	M5	38,0	19,0	19,1	35	11,60	M6	8	8	7,6	4,1	M5	22,0	4,0	6	37	43
Ø25	10	15	10	M5	5	22	M5	41,0	20,5	20,6	38	11,90	M6	8	8	7,5	4,1	M5	26,0	5,5	6	39	45
Ø32	12	16	12	M5	5	28	G1/8	49,4	24,7	24,9	45	15,25	M8	10	10	7,8	5,1	M6	32,5	6,5	7	44	51
Ø40	12	16	12	M5	5	33	G1/8	56,0	28,0	28,5	50	15,25	M8	10	10	8,0	5,1	M6	38,0	8,0	7	45	52
Ø50	16	16	16	M6	6	42	G1/8	67,0	33,5	33,7	60	14,30	M10	12	13	7,7	6,4	M8	46,5	11,0	8	45	53
Ø63	16	16	16	M6	6	50	G1/8	79,0	39,5	39,8	70	16,30	M10	12	13	8,0	6,4	M8	56,5	16,0	8	49	57

P1PS...DS8G Double acting with male piston rod thread

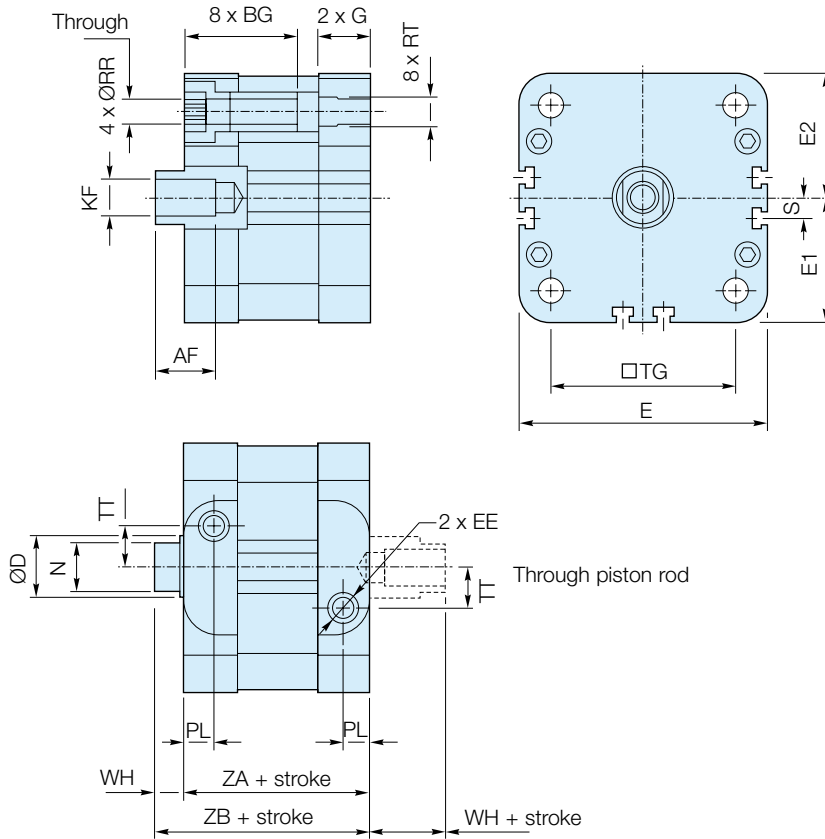


Bore size	AM +0 -0.5	WH		KK
		nom.	tol.	
Ø20	16	6	± 1,6	M8 x 1,25
Ø25	16	6	± 1,6	M8 x 1,25
Ø32	19	7	± 1,6	M10 x 1,25
Ø40	19	7	± 1,6	M10 x 1,25
Ø50	22	8	± 1,6	M12 x 1,25
Ø63	22	8	± 1,6	M12 x 1,25

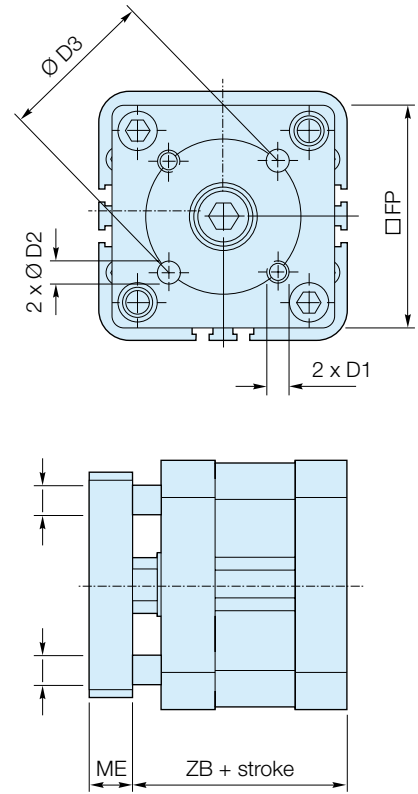
**Note:** Cylinders with male piston rod thread are delivered with one piston rod nut in zinc plated steel

Dimensions - Bore 80 - 100mm

P1PS...DS7G Double acting with female piston rod thread

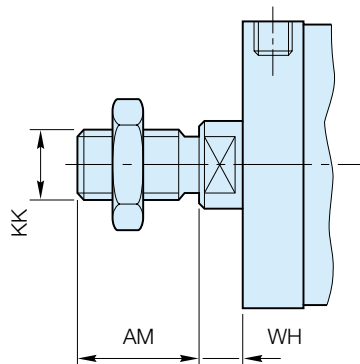


P1PG...DS Double acting with guided piston rod



Bore size	AF	BG	ØD	D1	ØD2	ØD3	EE	E	E1	E2	FP	G	KF	ME	N	PL	ØRR	RT	S	TG	TT	WH	ZA	ZB
	min	min				H8									h14		min					± 0,3	± 0,6	
Ø80	20	17	20	M8	8	65	G1/8	96	48,0	48,2	90	17,7	M12	14	17	10,5	8,4	M10	8	72	20	10	54	64
Ø100	20	17	25	M10	10	80	G1/8	115	57,5	57,7	110	23,0	M12	14	21	12,0	8,4	M10	18,5	89	24	10	67	77

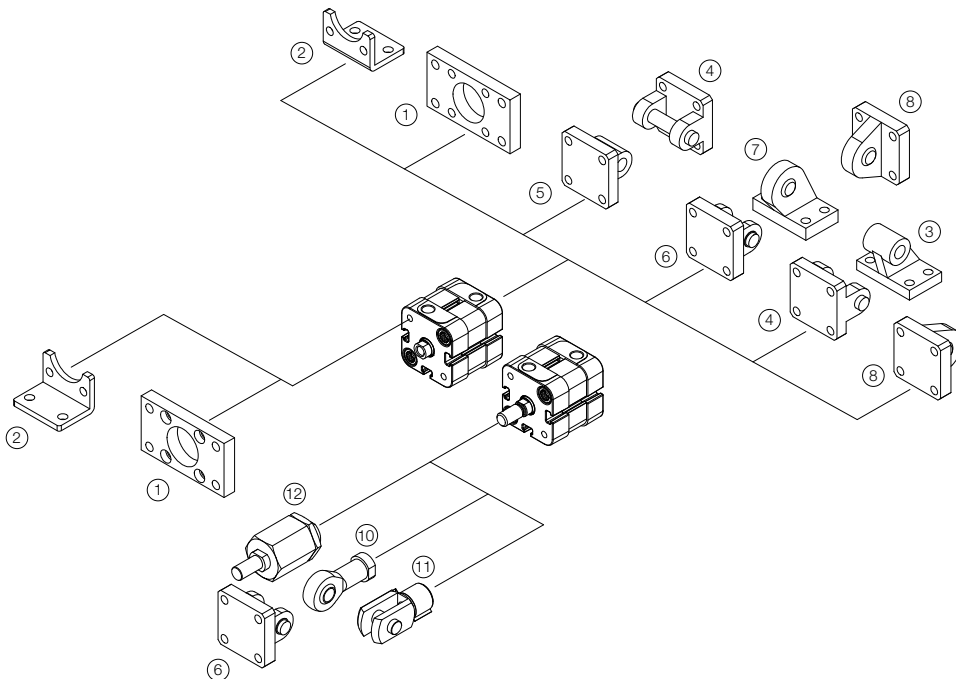
P1PS...DS8G Double acting with male piston rod thread



Bore size	AM	WH		KK
		nom.	tol.	
Ø80	28	10	± 1,6	M16 x 1,5
Ø100	28	10	± 1,6	M16 x 1,5

**Note:** Cylinders with male piston rod thread are delivered with one piston rod nut in zinc plated steel

	Flange MF1 / MF2 <sup>1</sup>	Foot brackets MS1 <sup>2</sup>	Pivot bracket with rigid bearing AB7 <sup>3</sup>	Clevis bracket MP2 <sup>4</sup>	Clevis bracket MP4 <sup>5</sup>
Ø 20	<b>P1P-4HMB</b>	<b>P1P-4HMF</b>			<b>P1P-4HME</b>
Ø 25	<b>P1P-4JMB</b>	<b>P1P-4JMF</b>			<b>P1P-4JME</b>
Ø 32	<b>P1C-4KMB</b>	<b>P1C-4KMF</b>	<b>P1C-4KMD</b>	<b>P1C-4KMT</b>	<b>P1C-4KME</b>
Ø 40	<b>P1C-4LMB</b>	<b>P1C-4LMF</b>	<b>P1C-4LMD</b>	<b>P1C-4LMT</b>	<b>P1C-4LME</b>
Ø 50	<b>P1C-4MMB</b>	<b>P1C-4MMF</b>	<b>P1C-4MMD</b>	<b>P1C-4MMT</b>	<b>P1C-4MME</b>
Ø 63	<b>P1C-4NMB</b>	<b>P1C-4NMF</b>	<b>P1C-4NMD</b>	<b>P1C-4NMT</b>	<b>P1C-4NME</b>
Ø 80	<b>P1C-4PMB</b>	<b>P1C-4PMF</b>	<b>P1C-4PMD</b>	<b>P1C-4PMT</b>	<b>P1C-4PME</b>
Ø 100	<b>P1C-4QMB</b>	<b>P1C-4QMF</b>	<b>P1C-4QMD</b>	<b>P1C-4QMT</b>	<b>P1C-4QME</b>
	Clevis bracket AB6 <sup>6</sup>	Pivot bracket with swivel bearing CS7 <sup>7</sup>	Swivel eye bracket MP6 <sup>8</sup>	3 and 4 positions flange JP1	Swivel rod eye AP6 <sup>10</sup>
Ø 20					<b>P1A-4HRS</b>
Ø 25					<b>P1A-4HRS</b>
Ø 32	<b>P1C-4KMCA</b>	<b>P1C-4KMA</b>	<b>P1C-4KMSA</b>	<b>P1E-6KB0</b>	<b>P1C-4KRS</b>
Ø 40	<b>P1C-4LMCA</b>	<b>P1C-4LMA</b>	<b>P1C-4LMSA</b>	<b>P1E-6LB0</b>	<b>P1C-4KRS</b>
Ø 50	<b>P1C-4MMCA</b>	<b>P1C-4MMA</b>	<b>P1C-4MMSA</b>	<b>P1E-6MB0</b>	<b>P1C-4LRS</b>
Ø 63	<b>P1C-4NMCA</b>	<b>P1C-4NMA</b>	<b>P1C-4NMSA</b>	<b>P1E-6NB0</b>	<b>P1C-4LRS</b>
Ø 80	<b>P1C-4PMCA</b>	<b>P1C-4PMA</b>	<b>P1C-4PMSA</b>	<b>P1E-6PB0</b>	<b>P1C-4MRS</b>
Ø 100	<b>P1C-4QMCA</b>	<b>P1C-4QMA</b>	<b>P1C-4QMSA</b>	<b>P1E-6QB0</b>	<b>P1C-4MRS</b>
	Clevis AP2 <sup>11</sup>	Flexo coupling PM5 <sup>12</sup>	Zinc-plated nut MR9 (Pack of 10 off)		
Ø 20	<b>P1A-4HRC</b>	<b>P1C-4HRF</b>	<b>P14-4HRPZ</b>		
Ø 25	<b>P1A-4HRC</b>	<b>P1C-4HRF</b>	<b>P14-4HRPZ</b>		
Ø 32	<b>P1C-4KRC</b>	<b>P1C-4KRF</b>	<b>P14-4KRPZ</b>		
Ø 40	<b>P1C-4KRC</b>	<b>P1C-4KRF</b>	<b>P14-4KRPZ</b>		
Ø 50	<b>P1C-4LRC</b>	<b>P1C-4LRF</b>	<b>P14-4LRPZ</b>		
Ø 63	<b>P1C-4LRC</b>	<b>P1C-4LRF</b>	<b>P14-4LRPZ</b>		
Ø 80	<b>P1C-4MRC</b>	<b>P1C-4MRF</b>	<b>P14-4MRPZ</b>		
Ø 100	<b>P1C-4MRC</b>	<b>P1C-4MRF</b>	<b>P14-4MRPZ</b>		





**Cylinder mountings**

**Flange MF1/MF2**



Intended for fixed mounting of cylinder. Flange can be fitted to front- or rear end-plates of cylinder.

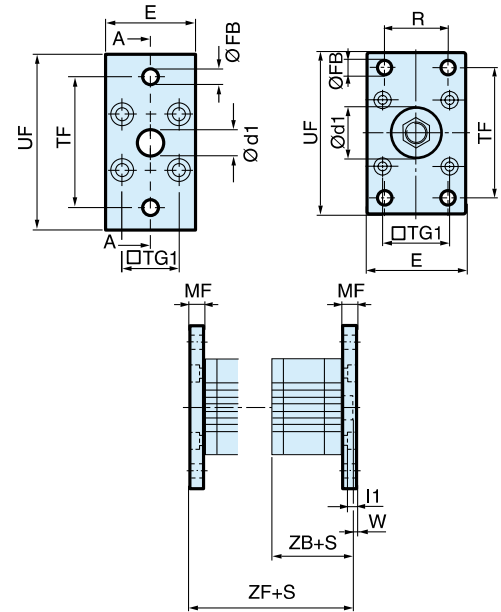
Materials  
Flange: Surface-treated steel  
Mounting screws according to DIN 6912: Zinc-plated steel 8.8

Supplied complete with mounting screws for attachment to cylinder.

Cyl. bore Ø mm	Weight kg	Order code
20	0,17	<b>P1P-4HMB</b>
25	0,20	<b>P1P-4JMB</b>
32	0,23	<b>P1C-4KMB</b>
40	0,28	<b>P1C-4LMB</b>
50	0,53	<b>P1C-4MMB</b>
63	0,71	<b>P1C-4NMB</b>
80	1,59	<b>P1C-4PMB</b>
100	2,19	<b>P1C-4QMB</b>

Cyl. bore mm	d1 mm	FB mm	TG1 mm	E mm	R mm	MF mm	TF mm	UF mm	I1 mm	W mm	ZF* mm	ZB* mm
	H11	H13				JS14	JS14				-0,5	
20	12,0	6,6	22,0	36	-	10,0	55,0	70	5,4	4,0	53,0	43,0
25	12,0	6,6	26,0	40	-	10,0	60,0	76	5,4	4,0	55,0	45,0
32	30,0	7,0	32,5	45	32	10,0	64,0	80	5,0	3,0	61,0	41,0
40	35,0	9,0	38,0	52	36	10,0	72,0	90	5,0	3,0	52,0	52,0
50	40,0	9,0	46,5	65	45	12,0	90,0	110	6,5	4,0	65,0	53,0
63	45,0	9,0	56,5	75	50	12,0	100,0	120	6,5	4,0	69,0	57,0
80	45,0	12,0	72,0	95	63	16,0	126,0	150	8,0	6,0	80,0	64,0
100	55,0	14,0	89,0	115	75	16,0	150,0	170	8,0	6,0	93,0	77,0

S = Stroke length



**Foot brackets MS1**



Intended for fixed mounting of cylinder. Angle bracket can be fitted to front- and rear end-plates of cylinder.

Materials  
Foot bracket: Surface-treated steel, black  
Mounting screws according to DIN 912: Zinc-plated steel 8.8

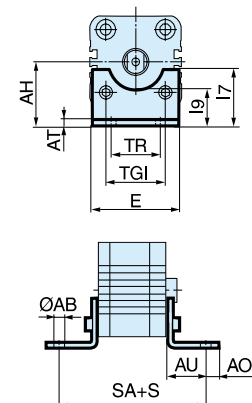
Supplied in pairs with mounting screws for attachment to cylinder.

Cyl. bore Ø mm	Weight kg	Order code
20	0,04**	<b>P1P-4HMF</b>
25	0,05**	<b>P1P-4JMF</b>
32	0,06**	<b>P1C-4KMF</b>
40	0,08**	<b>P1C-4LMF</b>
50	0,16**	<b>P1C-4MMF</b>
63	0,25**	<b>P1C-4NMF*</b>
80	0,50**	<b>P1C-4PMF</b>
100	0,85**	<b>P1C-4QMF*</b>

\*\* Weight per item

Cyl. bore mm	AB mm	TG1 mm	E mm	TR mm	AO mm	AU mm	AH mm	I7 mm	AT mm	I9 mm	SA** mm
	H14			JS14			JS15			JS14	
20	6,6	22,0	36	26	6,0	16,0	27	22,0	4,0	17,0	69,0
25	6,6	26,0	40	26	6,0	16,0	30	23,0	4,0	19,0	71,0
32	7,0	32,5	45	32	10,0	24,0	32	30,0	4,5	17,5	92,0
40	9,0	38,0	52	36	8,0	28,0	36	30,0	4,5	18,5	101,0
50	9,0	46,5	65	45	13,0	32,0	45	36,0	5,5	25,0	109,0
63	9,0	56,5	75	50	13,0	32,0	50	35,0	5,5	27,5	113,0
80	12,0	72,0	95	63	14,0	41,0	63	49,0	6,5	40,5	136,0
100	14,0	89,0	115	75	15,0	41,0	71	54,0	6,5	43,5	149,0

S = Stroke length



**Cylinder mountings**

**Pivot bracket with rigid bearing AB7**

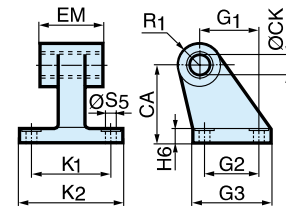
Intended for flexible mounting of cylinder. The pivot bracket can be combined with clevis bracket MP2.

Materials  
 Pivot bracket: Surface-treated aluminium, black  
 Bearing: Sintered oil-bronze bushing



Cyl. bore Ø mm	Weight kg	Order code
32	0,06	<b>P1C-4KMD</b>
40	0,08	<b>P1C-4LMD</b>
50	0,15	<b>P1C-4MMD</b>
63	0,20	<b>P1C-4NMD</b>
80	0,33	<b>P1C-4PMD</b>
100	0,49	<b>P1C-4QMD</b>

Cyl. bore mm	CK	S5	K1	K2	G1	G2	EM	G3	CA	H6	R1
	H9	H13	JS14		JS14	JS14			JS15		
32	10	6,6	38	51	21	18	25,5	31	32	8	10
40	12	6,6	41	54	24	22	27,0	35	36	10	11
50	12	9,0	50	65	33	30	31,0	45	45	12	13
63	16	9,0	52	67	37	35	39,0	50	50	12	15
80	16	11,0	66	86	47	40	49,0	60	63	14	15
100	20	11,0	76	96	55	50	59,0	70	71	15	19



**Clevis bracket MP2**

Intended for flexible mounting of cylinder. Clevis bracket MP2 can be combined with clevis bracket MP4.

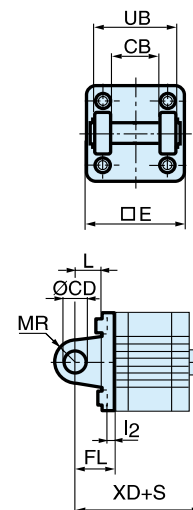
Materials  
 Clevis bracket: Surface-treated aluminium, black  
 Mounting screws according to DIN 912:  
 Zinc-plated steel 8.8  
 Pin: surface treated steel



Cyl. bore Ø mm	Weight kg	Order code
32	0,08	<b>P1C-4KMT</b>
40	0,11	<b>P1C-4LMT</b>
50	0,14	<b>P1C-4MMT</b>
63	0,29	<b>P1C-4NMT</b>
80	0,36	<b>P1C-4PMT</b>
100	0,64	<b>P1C-4QMT</b>

Cyl. bore mm	E	UB	CB	FL	L	l2	CD	MR	XD*
		h14	H14	±0,2			H9		
32	45,0	45	26,0	22	13	5,5	10	10	73,0
40	52,0	52	28,0	25	16	5,5	12	12	77,0
50	65,0	60	32,0	27	16	6,5	12	12	80,0
63	75,0	70	40,0	32	21	6,5	16	16	89,0
80	95,0	90	50,0	36	22	10,0	16	16	100,0
100	115,0	110	60,0	41	27	10,0	20	20	118,0

S = Stroke length



**Cylinder mountings**

**Clevis bracket MP4**



Intended for flexible mounting of cylinder. Clevis bracket MP4 can be combined with clevis bracket MP2.

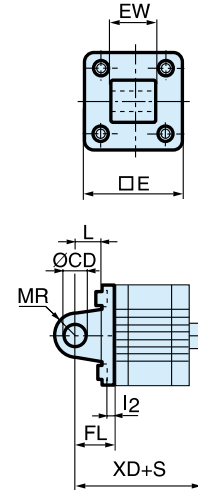
**Materials**  
 Clevis bracket: Surface-treated aluminium, black  
 Mounting screws according to DIN 912: Zinc-plated steel 8.8

Supplied complete with mounting screws for attachment to cylinder.

Cyl. bore Ø mm	Weight kg	Order code
20	0,04	<b>P1P-4HME</b>
25	0,05	<b>P1P-4JME</b>
32	0,09	<b>P1C-4KME</b>
40	0,13	<b>P1C-4LME</b>
50	0,17	<b>P1C-4MME</b>
63	0,36	<b>P1C-4NME</b>
80	0,46	<b>P1C-4PME</b>
100	0,83	<b>P1C-4QME</b>

Cyl. bore mm	E mm	EW mm	FL ±0,2 mm	L mm	I2 mm	CD H9 mm	MR mm	XD*
20	34,0	16,0	20	14	2,6	8	8	63,0
25	38,0	16,0	20	14	2,6	8	8	65,0
32	45,0	26,0	22	13	5,5	10	10	73,0
40	52,0	28,0	25	16	5,5	12	12	77,0
50	65,0	32,0	27	16	6,5	12	12	80,0
63	75,0	40,0	32	21	6,5	16	16	89,0
80	95,0	50,0	36	22	10,0	16	16	100,0
100	115,0	60,0	41	27	10,0	20	20	118,0

S = Stroke length



**Clevis bracket AB6**



Intended for flexible mounting of cylinder. Clevis bracket GA can be combined with pivot bracket with swivel bearing, swivel eye bracket and swivel rod eye.

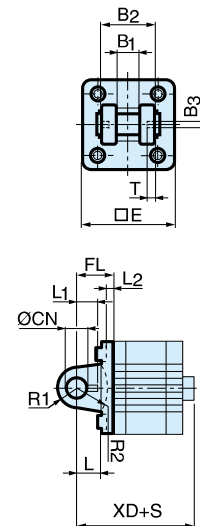
**Materials**  
 Clevis bracket: Surface-treated aluminium, black  
 Pin: Surface hardened steel  
 Locking pin: Spring steel  
 Circlips according to DIN 471: Spring steel  
 Mounting screws acc. to DIN 912: Zinc-plated steel 8.8

Supplied complete with mounting screws for attachment to cylinder.

Cyl. bore Ø mm	Weight kg	Order code
32	0,09	<b>P1C-4KMCA</b>
40	0,13	<b>P1C-4LMCA</b>
50	0,17	<b>P1C-4MMCA</b>
63	0,36	<b>P1C-4NMCA</b>
80	0,58	<b>P1C-4PMCA</b>
100	0,89	<b>P1C-4QMCA</b>

Cyl. bore mm	E mm	B2 d12 mm	B1 H14 mm	T mm	B3 mm	R2 mm	L1 mm	FL ±0,2 mm	I2 mm	L mm	CN F7 mm	R1 mm	XD*
32	45	34	14	3	3,3	17	11,5	22	5,5	12	10	11	73,0
40	52	40	16	4	4,3	20	12,0	25	5,5	15	12	13	77,0
50	65	45	21	4	4,3	22	14,0	27	6,5	17	16	18	80,0
63	75	51	21	4	4,3	25	14,0	32	6,5	20	16	18	89,0
80	95	65	25	4	4,3	30	16,0	36	10,0	20	20	22	100,0
100	115	75	25	4	4,3	32	16,0	41	10,0	25	20	22	118,0

S = Stroke length



**Stainless steel Pin Set AB6**

**Materials**  
 Pin: Stainless steel  
 Locking pin: Stainless steel  
 Circlips according to DIN 471: Stainless steel

Cyl. bore Ø mm	Weight kg	Order code
32	0,05	<b>9301054311</b>
40	0,06	<b>9301054312</b>
50	0,07	<b>9301054313</b>
63	0,07	<b>9301054314</b>
80	0,17	<b>9301054315</b>
100	0,31	<b>9301054316</b>

Cylinder mountings

Pivot bracket with swivel bearing CS7

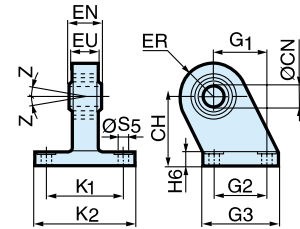


Intended for use together with clevis bracket GA.

Material  
 Pivot bracket: Surface-treated steel, black  
 Swivel bearing according to DIN 648K: Hardened steel

Cyl. bore Ø mm	Weight kg	Order code
32	0,18	<b>P1C-4KMA</b>
40	0,25	<b>P1C-4LMA</b>
50	0,47	<b>P1C-4MMA</b>
63	0,57	<b>P1C-4NMA</b>
80	1,05	<b>P1C-4PMA</b>
100	1,42	<b>P1C-4QMA</b>

Cyl. bore mm	CN H7	S5 H13	K1 JS14	K2 JS14	EU mm	G1 JS14	G2 JS14	EN mm	G3 mm	CH JS15	H6 mm	ER mm	Z mm
32	10	6,6	38	51	10,5	21	18	14	31	32	10	16	4°
40	12	6,6	41	54	12,0	24	22	16	35	36	10	18	4°
50	16	9,0	50	65	15,0	33	30	21	45	45	12	21	4°
63	16	9,0	52	67	15,0	37	35	21	50	50	12	23	4°
80	20	11,0	66	86	18,0	47	40	25	60	63	14	28	4°
100	20	11,0	76	96	18,0	55	50	25	70	71	15	30	4°



Swivel eye bracket MP6



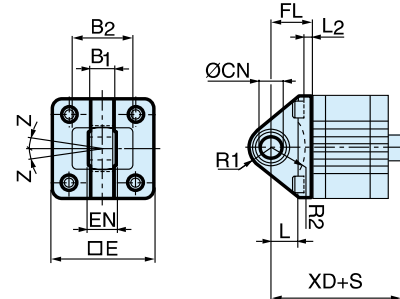
Intended for use together with clevis bracket GA

Material  
 Bracket: Surface-treated aluminium, black  
 Swivel bearing acc. to DIN 648K: Hardened steel

Supplied complete with mounting screws for attachment to cylinder.

Cyl. bore Ø mm	Weight kg	Order code
32	0,08	<b>P1C-4KMSA</b>
40	0,11	<b>P1C-4LMSA</b>
50	0,20	<b>P1C-4MMSA</b>
63	0,27	<b>P1C-4NMSA</b>
80	0,52	<b>P1C-4PMSA</b>
100	0,72	<b>P1C-4QMSA</b>

Cyl. bore mm	E mm	B1 mm	B2 mm	EN mm	R1 mm	R2 mm	FL mm	I2 mm	L mm	CN H7	XD* mm	XD2* mm	Z mm
32	45	10,5	38	14	16	14	22	5,5	12	10	70,5	79,0	4°
40	52	12,0	44	16	18	16	25	5,5	15	12	75,5	83,5	4°
50	65	15,0	51	21	21	19	27	6,5	15	16	79,5	86,0	4°
63	75	15,0	56	21	23	22	32	6,5	20	16	90,0	95,5	4°
80	95	18,0	-	25	29	-	36	10,0	20	20	210,0	-	4°
100	115	18,0	-	25	31	-	41	10,0	25	20	230,0	-	4°



S=Stroke length

3 and 4 positions flange JP1

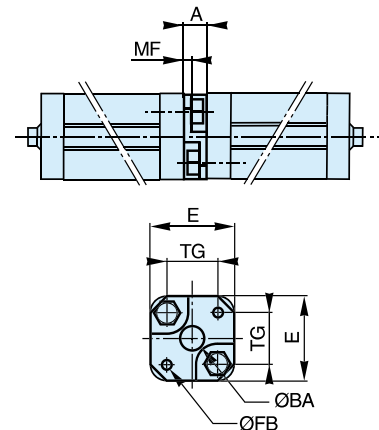


Mounting kit for back to back mounted cylinders, 3 and 4 position cylinders.

Material:  
 Mounting: Aluminium  
 Mounting screws: Zinc-plated steel 8.8

Cyl. bore Ø mm	Weight kg	Order code
32	0,060	<b>P1E-6KB0</b>
40	0,078	<b>P1E-6LB0</b>
50	0,162	<b>P1E-6MB0</b>
63	0,194	<b>P1E-6NB0</b>
80	0,450	<b>P1E-6PB0</b>
100	0,672	<b>P1E-6QB0</b>

Cyl. bore mm	E mm	TG mm	ØFB mm	MF mm	A mm	ØBA mm
32	50	32,5	6,5	5	16	30
40	60	38,0	6,5	5	16	35
50	66	46,5	8,5	6	20	40
63	80	56,5	8,5	6	20	45
80	100	72,0	10,5	8	25	45
100	118	89,0	10,5	8	25	55



Piston rod mountings

Swivel rod eye AP6



Swivel rod eye for articulated mounting of cylinder. Swivel rod eye can be combined with clevis bracket GA. Maintenance-free.

Materials  
Swivel rod eye: Zinc-plated steel  
Swivel bearing according to DIN 648K: Hardened steel

Cyl. bore Ø mm	Weight kg	Order code
20 / 25	0,045	<b>P1A-4HRS</b>
32 / 40	0,08	<b>P1C-4KRS</b>
50 / 63	0,12	<b>P1C-4LRS</b>
80 / 100	0,25	<b>P1C-4MRS</b>

Stainless steel swivel rod eye AP6

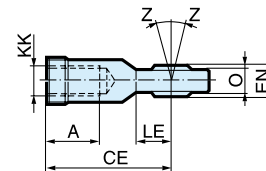
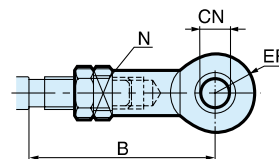


Stainless-steel swivel rod eye for articulated mounting of cylinder. Swivel rod eye can be combined with clevis bracket GA. Maintenance-free.

Materials  
Swivel rod eye: Stainless steel  
Swivel bearing according to DIN 648K: Stainless steel

Cyl. bore Ø mm	Weight kg	Order code
20 / 25	0,045	<b>P1S-4HRT</b>
32 / 40	0,08	<b>P1S-4JRT</b>
50 / 63	0,12	<b>P1S-4LRT</b>
80 / 100	0,25	<b>P1S-4MRT</b>

Use stainless steel nut with stainless steel swivel rod eye.



Cyl. bore mm	A mm	B min mm	B max mm	CE mm	CN H9 mm	EN h12 mm	ER mm	KK	LE mm	N min mm	O mm	Z
20 / 25	12	40,0	45	36	8	12	12	M8x1,25	12	13	9,0	12°
32 / 40	20	48,0	55	43	10	14	14	M10x1,25	15	17	10,5	12°
50 / 63	22	56,0	62	50	12	16	16	M12x1,25	17	19	12,0	12°
80 / 100	28	72,0	80	64	16	21	21	M16x1,5	22	22	15,0	15°

Clevis AP2



Clevis for articulated mounting of cylinder.

Material  
Clevis, clip: Galvanized steel  
Pin: Hardened steel

Cyl. bore Ø mm	Weight kg	Order code
20 / 25	0,045	<b>P1A-4HRC</b>
32 / 40	0,09	<b>P1C-4KRC</b>
50 / 63	0,15	<b>P1C-4LRC</b>
80 / 100	0,35	<b>P1C-4MRC</b>

Stainless steel clevis AP2

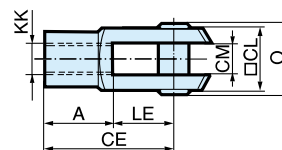
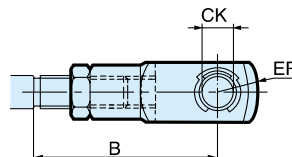


Stainless-steel clevis for articulated mounting of cylinder.

Material  
Clevis: Stainless steel  
Pin: Stainless steel  
Circlips according to DIN 471: Stainless steel

Cyl. bore Ø mm	Weight kg	Order code
20 / 25	0,045	<b>P1S-4HRD</b>
32 / 40	0,09	<b>P1S-4JRD</b>
50 / 63	0,15	<b>P1S-4LRD</b>
80 / 100	0,35	<b>P1S-4MRD</b>

Use stainless steel nut with stainless steel swivel rod eye.



Cyl. bore mm	A mm	B min mm	B max mm	CE mm	CK h11/E9 mm	CL mm	CM mm	ER mm	KK	LE mm	O mm
20 / 25	16	36,0	41	32	8	16	8	-	M8x1,25	16	24,0
32 / 40	20	45,0	52	40	10	20	10	16	M10x1,25	20	28,0
50 / 63	24	54,0	60	48	12	24	12	19	M12x1,25	24	32,0
80 / 100	32	72,0	80	64	16	32	16	25	M16x1,5	32	41,5

**Piston rod mountings**

**Flexo coupling PM5**



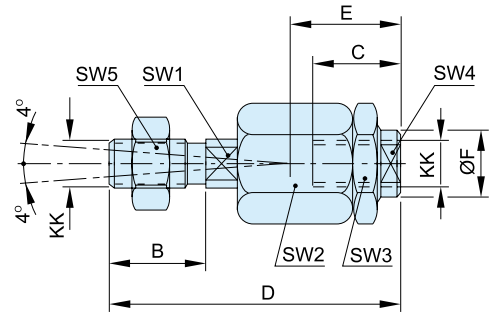
Flexo coupling for articulated mounting of piston rod. Flexo fitting is intended to take up axial angle errors within a range of ±4°.

Material  
Flexo coupling, nut: Zinc-plated steel

Supplied complete with galvanized adjustment nut.

Cyl. bore Ø mm	Weight kg	Order code
20 / 25	0,06	<b>P1C-4HRF</b>
32 / 40	0,23	<b>P1C-4KRF</b>
50 / 63	0,23	<b>P1C-4LRF</b>
80 / 100	0,65	<b>P1C-4MRF</b>

Cyl. bore mm	KK mm	B mm	C mm	D mm	E mm	ØF mm	SW1 mm	SW2 mm	SW3 mm	SW4 mm	SW5 mm
20 / 25	M8x1.25	16	14	55	20	12.4	7	17	17	10	13
32 / 40	M10x1.25	20	23	73	31	21	12	30	30	19	17
50 / 63	M12x1.5	24	23	77	31	21	12	30	30	19	19
80 / 100	M16x1.5	32	32	108	45	33.5	19	41	41	30	24



**Nut MR9**



Intended for fixed mounting of accessories to the piston rod. Material: Zinc-plated steel

All P1D cylinders are delivered with a zinc-plated steel piston rod nut.

Supplied as pack of 10 off

Cyl. bore Ø mm	Weight * kg	Order code
20 / 25	0,005	<b>P14-4HRPZ</b>
32 / 40	0,007	<b>P14-4KRPZ</b>
50 / 63	0,021	<b>P14-4LRPZ</b>
80 / 100	0,040	<b>P14-4MRPZ</b>

\* Weight per item

**Stainless steel nut MR9**



Intended for fixed mounting of accessories to the piston rod.

Material: Stainless steel A2

All P1D cylinders are delivered with a zinc-plated steel piston rod nut.

Supplied as pack of 10 off

Cyl. bore Ø mm	Weight * kg	Order code
20 / 25	0,005	<b>P14-4HRPS</b>
32 / 40	0,007	<b>P14-4KRPS</b>
50 / 63	0,021	<b>P14-4LRPS</b>
80 / 100	0,040	<b>P14-4MRPS</b>

\* Weight per item

According to DIN 439 B

Cyl. bore mm	d mm	M mm	S mm
20 / 25	M8x1,25		
32 / 40	M10x1,25	5,0	17
50 / 63	M12x1,25	6,0	19
80 / 100	M16x1,5	10,0	30

