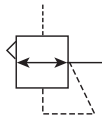


11R Pilot Controlled Regulator – Compact

- Balanced poppet provides quick response and accurate pressure regulation
- Pilot controlled regulators can be mounted “out of reach” with pilot regulator installed in a convenient location
- Solid control piston for extended life
- Two full flow 1/4" gauge ports can be used as additional outlets
- Pilot port 1/4 Inch
- 1/4", 3/8", 1/2" ports (NPT, BSPP)



Port size	Description	Part number
1/4"	Without gauge	11R115PC
1/4"	With 160 psi gauge	11R121PC
3/8"	Without gauge	11R215PC
3/8"	With 160 psi gauge	11R221PC
1/2"	Without gauge	11R315PC
1/2"	With 160 psi gauge	11R321PC

NOTE: 2.0 Dia. (51 mm) hole required for panel mounting.

Operating information

Supply pressure (max):	0 to 250 psig (0 to 17.2 bar)	
Operating temperature:	32°F to 175°F (0°C to 80°C)	
Flow capacity [†] :		
High flow	1/4"	85 scfm (40 dm ³ /s, ANR)
	3/8"	95 scfm (44.8 dm ³ /s, ANR)
	1/2"	95 scfm (44.8 dm ³ /s, ANR)
Gauge ports (2):	1/4 inch (can be used as additional full flow 1/4 inch outlet ports)	
Weight:	1.3 lb (0.53 kg)	

[†] scfm = Standard cubic feet per minute at 100 psig inlet, 90 psig no flow secondary setting and 10 psig pressure drop.

Ordering information:

11R

Port Threads	
1/4 inch	1
3/8 inch	2
1/2 inch	3

2

Relief / Gauge Options	
Without gauge	
Non-relieving piston	14
Relieving piston	15
With gauge *	
Non-relieving piston	19
Relieving piston	21

* Includes 2" dial face gauge 0 to 300 psig.

15

Engineering Level	
C	Current

P

Adjustment	
P	Pilot operated

C

Port Type	
Blank	NPT
1	BSPP

 Most popular.



For inventory, lead times, and kit lookup, visit www.pdnplu.com

K50

Parker Hannifin Corporation
Pneumatic Division
Richland, Michigan
www.parker.com/pneumatics

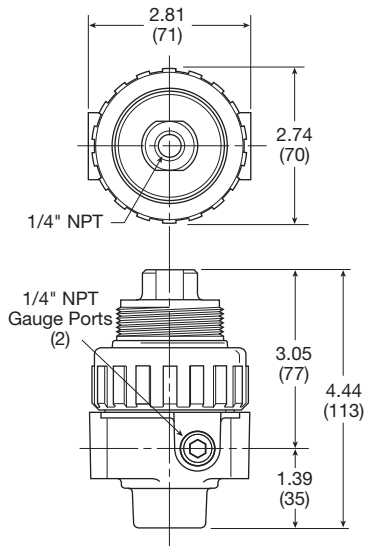
Compact Pilot Controlled Regulators

Material Specifications

Body & pilot cap	Zinc
Piston, valve poppet, & collar	Plastic
Seals	Nitrile
Springs	Steel

Repair and Service Kits

Seat Insert kit	PS713P
2" dial face 60 psig (0 to 4.1 bar), gauge	K4520N14060
2" dial face 160 psig (0 to 11.0 bar), gauge	K4520N14160
2" dial face 300 psig (0 to 20.7 bar), gauge	K4520N14300
1-3/4" digital round face 160 psig (0 to 11.0 bar), gauge	K4517N14160D
Mounting bracket kit (includes panel mount nut)	PS707P
Panel mount nut, plastic	P04082
Panel mount nut, metal	P04079B
Pilot conversion kit – relieving	PS745P
Non-Relieving	PS747P
Relieving	PS749P

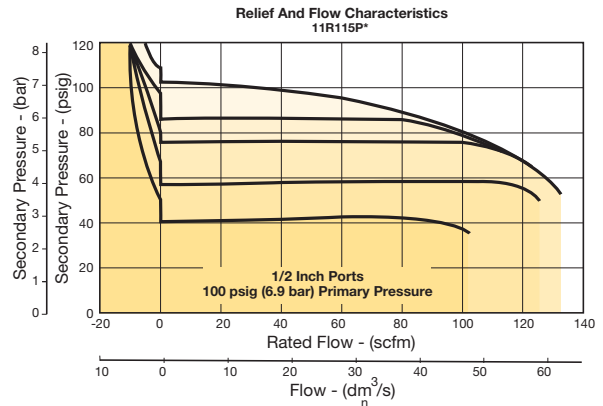


Inches (mm)

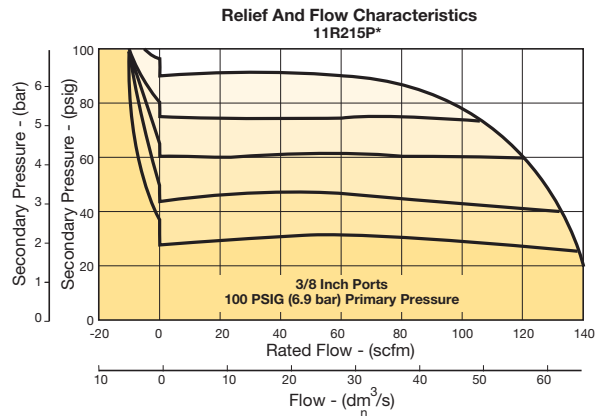
Air Preparation Products Regulator Products

Flow Charts

1/2" Regulator



3/8" Regulator



WARNING

Product rupture can cause serious injury.
Do not connect regulator to bottled gas.
Do not exceed Maximum primary pressure rating.

General

Dial

Pilot

Proportional

Precision

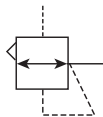
Water

K

Regulator
Products

12R Pilot Controlled Regulator – Standard

- Balanced poppet provides quick response and accurate pressure regulation
- Pilot controlled regulators can be mounted “out of reach” with pilot regulator installed in a convenient location
- Solid control piston for extended life
- Two full flow 1/4" gauge ports can be used as additional outlets
- Pilot port 1/4 Inch
- 1/2", 3/4" ports (NPT, BSPP, BSPT)



Operating information

Supply pressure (max):	0 to 250 psig (0 to 17.2 bar)	
Operating temperature:	32°F to 175°F (0°C to 80°C)	
Flow capacity [†] :		
High flow	1/2"	140 scfm (66 dm ³ /s, ANR)
	3/4"	140 scfm (66 dm ³ /s, ANR)
Gauge ports (2):	1/4 inch (can be used as additional full flow 1/4 inch outlet ports)	
Weight:	2.0 lb (0.91 kg)	

[†] scfm = Standard cubic feet per minute at 100 psig inlet, 90 psig no flow secondary setting and 10 psig pressure drop.

Port size	Description	Part number
1/2"	Without gauge	12R315PB
1/2"	With 160 psi gauge	12R321PB
3/4"	Without gauge	12R415PB
3/4"	With 160 psi gauge	12R421PB

NOTE: 2.0 Dia. (51 mm) hole required for panel mounting.

Ordering information:

12R	3	15	P	B															
<table border="1" style="width: 100%; text-align: left;"> <thead> <tr><th>Port Threads</th></tr> </thead> <tbody> <tr><td>1/2 inch</td></tr> <tr><td>3/4 inch</td></tr> </tbody> </table>		Port Threads	1/2 inch	3/4 inch	<table border="1" style="width: 100%; text-align: left;"> <thead> <tr><th>Relief / Gauge Options</th></tr> </thead> <tbody> <tr><td>Without gauge</td></tr> <tr><td>Non-relieving piston</td></tr> <tr><td>Relieving piston</td></tr> <tr><td>With gauge *</td></tr> <tr><td>Non-relieving piston</td></tr> <tr><td>Relieving piston</td></tr> </tbody> </table>		Relief / Gauge Options	Without gauge	Non-relieving piston	Relieving piston	With gauge *	Non-relieving piston	Relieving piston	<table border="1" style="width: 100%; text-align: left;"> <thead> <tr><th>Port Type</th></tr> </thead> <tbody> <tr><td>Blank</td></tr> <tr><td>1</td></tr> <tr><td>2</td></tr> </tbody> </table>		Port Type	Blank	1	2
Port Threads																			
1/2 inch																			
3/4 inch																			
Relief / Gauge Options																			
Without gauge																			
Non-relieving piston																			
Relieving piston																			
With gauge *																			
Non-relieving piston																			
Relieving piston																			
Port Type																			
Blank																			
1																			
2																			
<table border="1" style="width: 100%; text-align: left;"> <thead> <tr><th>Engineering Level</th></tr> </thead> <tbody> <tr><td>B</td></tr> </tbody> </table>			Engineering Level	B	<table border="1" style="width: 100%; text-align: left;"> <thead> <tr><th>Adjustment</th></tr> </thead> <tbody> <tr><td>P</td></tr> </tbody> </table>			Adjustment	P										
Engineering Level																			
B																			
Adjustment																			
P																			

* Includes 2" dial face gauge 0 to 300 psig.

General

Dial

Pilot

Proportional

Precision

Water

K

Regulator Products

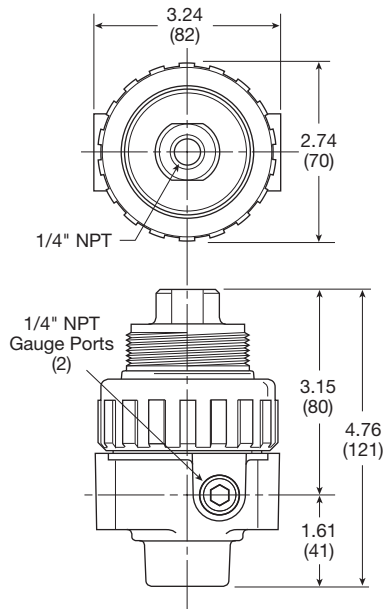
Standard Pilot Controlled Regulators

Material Specifications

Body & pilot cap	Zinc
Piston, valve poppet, & collar	Plastic
Seals	Nitrile
Springs	Steel

Repair and Service Kits

Seat insert kit	PS813P
2" dial face 60 psig (0 to 4.1 bar)	K4520N14060
2" dial face 160 psig (0 to 11.0 bar)	K4520N14160
2" dial face 300 psig (0 to 20.7 bar)	K4520N14300
1-3/4" digital round face 160 psig (0 to 11.0 bar)	K4517N14160D
Mounting bracket kit (includes panel mount nut)	PS807P
Panel mount nut, plastic	P04082
Panel mount nut, metal	P04079B
Pilot conversion kit – relieving	PS745P
Non-relieving	PS847P
Relieving	PS849P

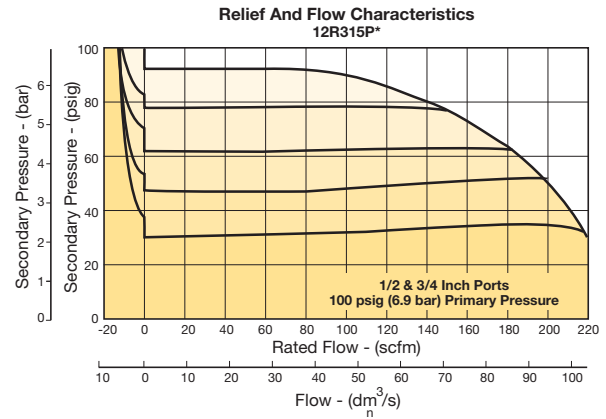


Inches (mm)

Air Preparation Products Regulator Products

Flow Charts

1/2 and 3/4" Regulator



⚠ WARNING

**Product rupture can cause serious injury.
Do not connect regulator to bottled gas.
Do not exceed Maximum primary pressure rating.**

General

Dial

Pilot

Proportional

Precision

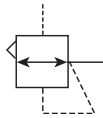
Water

K

Regulator
Products

P3NR Pilot Controlled Regulator - Hi-Flow

- Port blocks (PB) available to provide 1-1/2" port extension to 1" ported bodies
- Self relieving feature plus balanced poppet provides quick response and accurate pressure regulation
- Solid control piston for extended life
- 3/4", 1" 1-1/2" ports (NPT, BSPP)



Port size	Description	Part number
3/4"	Without gauge	P3NRA96BPP
1"	Without gauge	P3NRA98BPP
1-1/2" #	Without gauge	P3NRA9PBPP

1" port body with 1-1/2" port block.

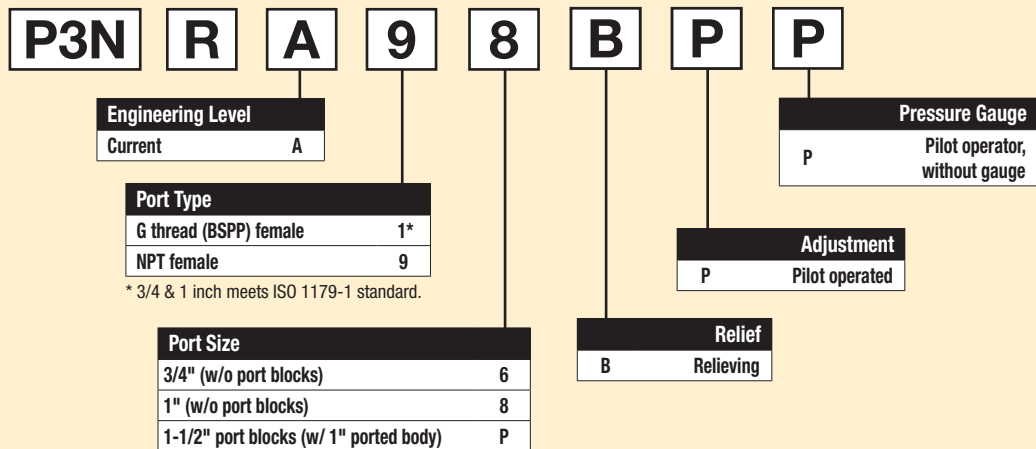
Operating information

Supply pressure (max):	250 psig (17.2 bar)
Operating temperature:	32°F to 175°F (0°C to 80°C)
Flow capacity†:	
High flow	
3/4"	300 scfm (141.6 dm³/s, ANR)
1"	300 scfm (141.6 dm³/s, ANR)
1-1/2"	350 scfm (165.2 dm³/s, ANR)
Gauge ports (2):	1/4 inch
Weight:	
3/4", 1"	3.3 lb (1.5 kg)
1-1/2" #	4.4 lb (2.0 kg)

† scfm = Standard cubic feet per minute at 100 psig inlet, 90 psig no flow secondary setting and 10 psig pressure drop.

1" port body with 1-1/2" port block

Ordering information:



Note: BSPP ported units supplied using NPT ported bodies and BSPP port block kits.

Most popular.



For inventory, lead times, and kit lookup, visit www.pdnplu.com

K54

Parker Hannifin Corporation
Pneumatic Division
Richland, Michigan
www.parker.com/pneumatics

Hi-Flow Pilot Controlled Regulators

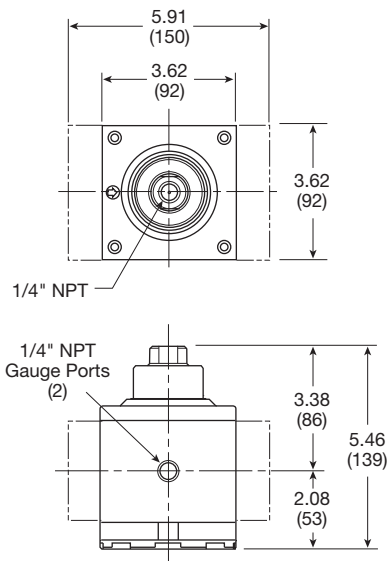
Material Specifications

Adjusting stem	Steel
Body	Aluminum
Bonnet	Aluminum
Piston	Plastic
Poppet assembly	Brass
Seals	Nitrile
Springs – poppet	Steel

Repair and Service Kits

2" dial face 60 psig (0 to 4.1 bar), gauge	K4520N14060
2" dial face 160 psig (0 to 11.0 bar), gauge	K4520N14160
2" dial face 300 psig (0 to 20.7 bar), gauge	K4520N14300
1-3/4" digital round face 160 psig (0 to 11.0 bar), gauge	K4517N14160D
Mounting bracket kit*	P3NKA00MW
Relieving	P3NKA00PD

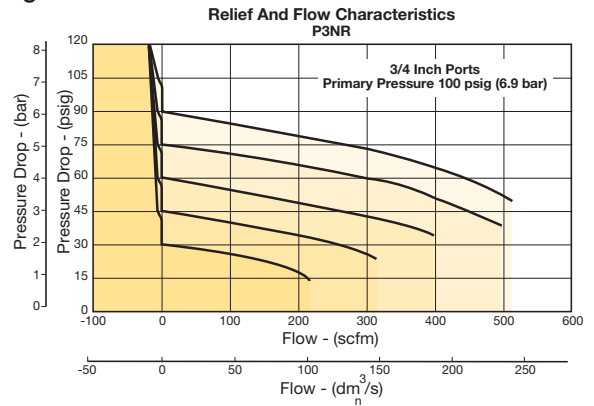
* If 1-1/2 BSPP E02 fittings are required, use P3NKA00BMW.



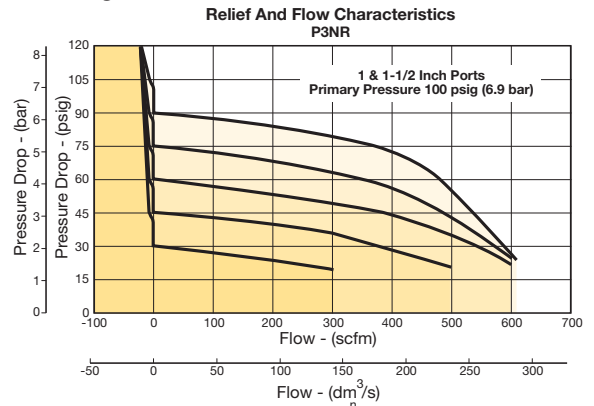
Air Preparation Products Regulator Products

Flow Charts

3/4" Regulator



1" & 1-1/2" Regulator



⚠ WARNING

**Product rupture can cause serious injury.
Do not connect regulator to bottled gas.
Do not exceed Maximum primary pressure rating.**

General

Dial

Pilot

Proportional

Precision

Water

K

Regulator
Products



R119 – Pilot Operated Regulators

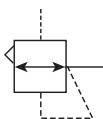
- Adapted for control by a remote or distant small pilot regulator. Ideal for maximum capacity requirements in applications where units are not readily accessible
- High flow performance featuring rugged design for the most demanding applications
- Ideal for those installations calling for constant pressure with wide variation in flow
- Diaphragm operated design with balanced poppet and constant bleed pilot for quick and accurate regulation.
- Secondary aspiration plus balanced poppet provides quick response and accurate pressure regulation
- Reverse flow available
- 1/4", 3/8", 1/2" ports (NPT, BSPP)



Operating information

Supply pressure (max):	300 psig (0 to 20.7 bar)	
Air consumption:	Constant bleed from air pilot chamber: approx. 0.17 scfm (10 scfh)	
Operating temperature:	40°F to 125°F (4.4°C to 52°C)	
Pilot pressure:	1/4", 3/8" thread - 1/8" 1/2" thread - 1/4"	
Reduced pressure range:	Adjustable to within 5 to 7 psig (0.34 to 0.48 bar) of supply pressure	
Flow capacity†:		
High flow	1/4"	100 scfm (47.2 dm³/s, ANR)
	3/8"	110 scfm (51.9 dm³/s, ANR)
	1/2"	150 scfm (70.8 dm³/s, ANR)
Gauge ports (2):	1/4 inch	
Weight:	1/4"	1.6 lb (0.73 kg)
	3/8"	1.6 lb (0.73 kg)
	1/2"	2.6 lb (1.18 kg)

† scfm = Standard cubic feet per minute at 100 psig inlet, 75 psig no flow secondary setting and 20 psig pressure drop.



Port size	Description (0-125 psig reduced pressure)	Part number
1/4"	Without gauge, relieving, NPT	R119-02J/M2
3/8"	Without gauge, relieving, NPT	R119-03J/M2
1/2"	Without gauge, relieving, NPT	R119-04J/M2

Ordering information:

R119
-
02
J

/M2

Port Threads	
NPT	-
BSPP	G

Port Size	
1/4 inch	02
3/8 inch	03
1/2 inch	04

Engineering Level	
/M2	Current

Options	
Blank	None
K	Non-relieving
X64*	Fluorocarbon o-rings and diaphragm
X71	Non-bleed (for use with electronic controllers)
X7	Brass bottom plug

* Brass bottom plug standard with X64 option.

Reduced Pressure Range	
Air pilot operated	J

 Most popular.



For inventory, lead times, and kit lookup, visit www.pdnplu.com

Material Specifications

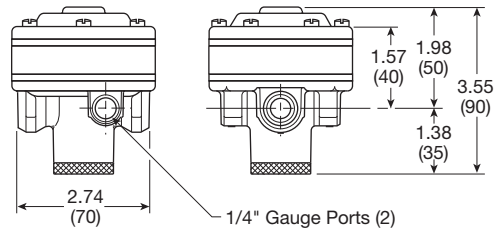
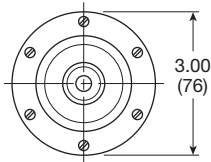
Body, ring, top plate	Zinc
Bottom plug	Nylon
Innervalve	Brass
Seals	Buna N

Repair and Service Kits

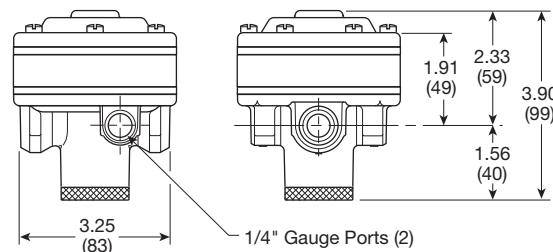
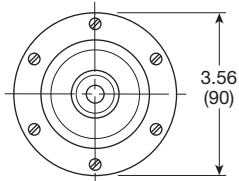
2" dial face 60 psig (0 to 4.1 bar), gauge	K4520N14060
2" dial face 160 psig (0 to 11.0 bar), gauge	K4520N14160
2" dial face 300 psig (0 to 20.7 bar), gauge	K4520N14300
1-3/4" digital round face 160 psig (0 to 11.0 bar), gauge	K4517N14160D
Non-relieving diaphragm, valve assembly (1/2")	RK118X20A
Non-relieving diaphragm, valve assembly (1/4", 3/8")	RK118X20Y
Relieving diaphragm, valve assembly (1/2")	RK119X20A
Relieving diaphragm, valve assembly (1/4", 3/8")	RK119X20Y

For fluorocarbon repair kits, add X64 to kit number suffix.
 For non-bleed pilot repair kits, add X71 to kit number suffix.

R119-02J, R119-03J



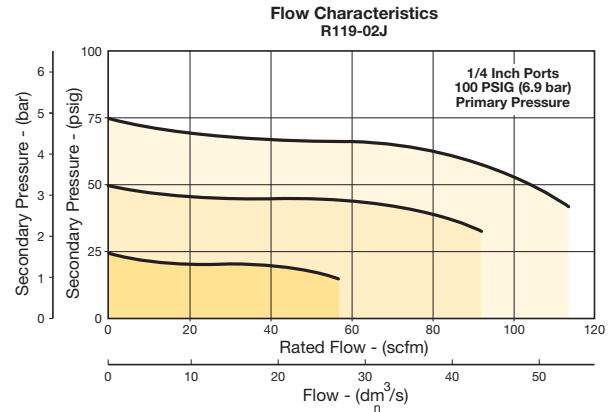
R119-04J



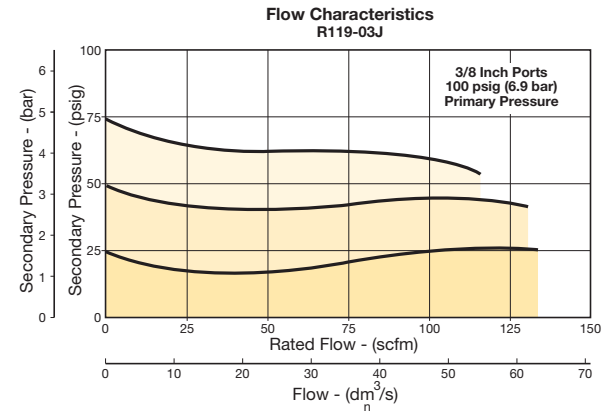
Inches (mm)

Flow Charts

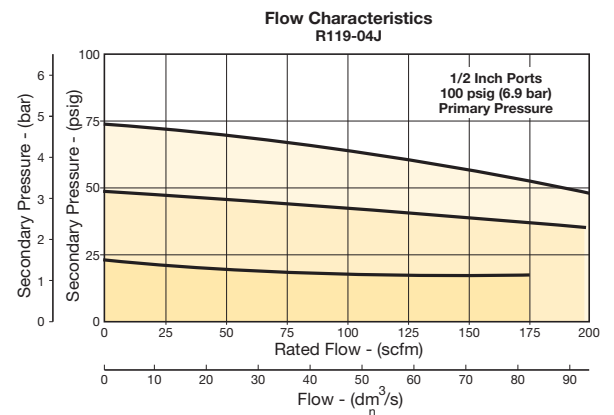
1/4" Regulator



3/8" Regulator



1/2" Regulator



⚠ WARNING
 Product rupture can cause serious injury.
 Do not connect regulator to bottled gas.
 Do not exceed Maximum primary pressure rating.

General

Dial

Pilot

Proportional

Precision

Water

K

Regulator
 Products



For inventory, lead time, and kit lookup, visit www.pdnplu.com

R119 Pilot Operated Regulators - Hi-Flow

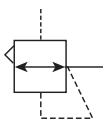
- Adapted for control by a remote or distant small pilot regulator. Ideal for maximum capacity requirements in applications where units are not readily accessible
- High flow performance featuring rugged design for the most demanding applications
- Ideal for those installations calling for constant pressure with wide variation in flow
- Diaphragm operated design with balanced poppet and constant bleed pilot for quick and accurate regulation
- Secondary aspiration plus balanced poppet provides quick response and accurate pressure regulation
- Reverse flow version available
- 3/4", 1", 1-1/2" ports (NPT, BSPP)



Operating information

Supply pressure (max):	300 psig (0 to 20.7 bar)	
Air consumption:	Constant bleed from air pilot chamber: approx. 0.17 scfm (10 scfh)	
Operating temperature:	40°F to 125°F (4.4°C to 52°C)	
Reduced pressure range:	Adjustable to within 5 to 7 psig (0.34 to 0.48 bar) of supply pressure	
Flow capacity [†] :		
High flow	3/4"	300 scfm (141.6 dm ³ /s, ANR)
	1"	300 scfm (141.6 dm ³ /s, ANR)
	1-1/2"	500 scfm (236 dm ³ /s, ANR)
Gauge ports (2):	1/4 inch	
Weight:	3/4"	5.2 lb (2.36 kg)
	1"	5.2 lb (2.36 kg)
	1-1/2"	5.6 lb (2.54 kg)

[†] scfm = Standard cubic feet per minute at 100 psig inlet, 75 psig no flow secondary setting and 20 psig pressure drop.



Port size	Description (0-125 psig reduced pressure)	Part number
3/4"	Without gauge, relieving, NPT	R119-06J/M2
1"	Without gauge, relieving, NPT	R119-08J/M2
1-1/2"	Without gauge, relieving, NPT	R119-12J/M2

Ordering information:

R119
-
06
J
/M2

<table border="1" style="width: 100%; border-collapse: collapse;"> <thead> <tr> <th colspan="2">Port Threads</th> </tr> </thead> <tbody> <tr> <td>NPT</td> <td style="text-align: center;">-</td> </tr> <tr> <td>BSPP</td> <td style="text-align: center;">G</td> </tr> </tbody> </table>	Port Threads		NPT	-	BSPP	G	<table border="1" style="width: 100%; border-collapse: collapse;"> <thead> <tr> <th colspan="2">Port Size</th> </tr> </thead> <tbody> <tr> <td>3/4 inch</td> <td style="text-align: center;">06</td> </tr> <tr> <td>1 inch</td> <td style="text-align: center;">08</td> </tr> <tr> <td>1-1/2 inch</td> <td style="text-align: center;">12</td> </tr> </tbody> </table>	Port Size		3/4 inch	06	1 inch	08	1-1/2 inch	12	<table border="1" style="width: 100%; border-collapse: collapse;"> <thead> <tr> <th colspan="2">Engineering Level</th> </tr> </thead> <tbody> <tr> <td>/M2</td> <td style="text-align: center;">Current</td> </tr> </tbody> </table>	Engineering Level		/M2	Current
Port Threads																				
NPT	-																			
BSPP	G																			
Port Size																				
3/4 inch	06																			
1 inch	08																			
1-1/2 inch	12																			
Engineering Level																				
/M2	Current																			
<table border="1" style="width: 100%; border-collapse: collapse;"> <thead> <tr> <th colspan="2">Reduced Pressure Range</th> </tr> </thead> <tbody> <tr> <td>Air pilot operated</td> <td style="text-align: center;">J</td> </tr> </tbody> </table>		Reduced Pressure Range		Air pilot operated	J	<table border="1" style="width: 100%; border-collapse: collapse;"> <thead> <tr> <th colspan="2">Options</th> </tr> </thead> <tbody> <tr> <td>Blank</td> <td style="text-align: center;">None</td> </tr> <tr> <td>K</td> <td style="text-align: center;">Non-relieving</td> </tr> <tr> <td>X64*</td> <td style="text-align: center;">Fluorocarbon o-rings and diaphragm</td> </tr> <tr> <td>X71</td> <td style="text-align: center;">Non-bleed (for use with electronic controllers)</td> </tr> <tr> <td>X80</td> <td style="text-align: center;">Reverse flow</td> </tr> </tbody> </table>	Options		Blank	None	K	Non-relieving	X64*	Fluorocarbon o-rings and diaphragm	X71	Non-bleed (for use with electronic controllers)	X80	Reverse flow		
Reduced Pressure Range																				
Air pilot operated	J																			
Options																				
Blank	None																			
K	Non-relieving																			
X64*	Fluorocarbon o-rings and diaphragm																			
X71	Non-bleed (for use with electronic controllers)																			
X80	Reverse flow																			

* Brass bottom plug standard with X64 option.

 Most popular.



For inventory, lead times, and kit lookup, visit www.pdnplu.com

Hi-Flow Regulators

Material Specifications

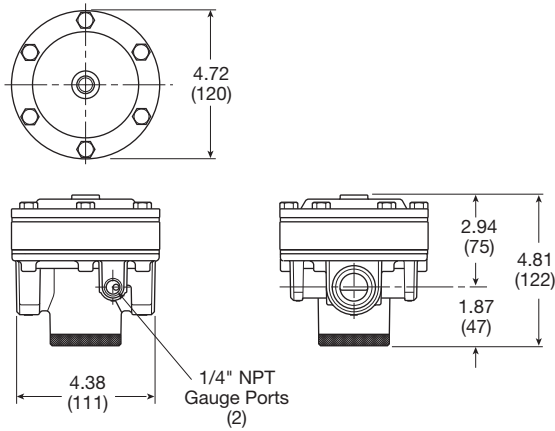
Body, ring, top plate	Zinc
Bottom plug, innervalve	Brass
Seals	Buna N

Repair and Service Kits

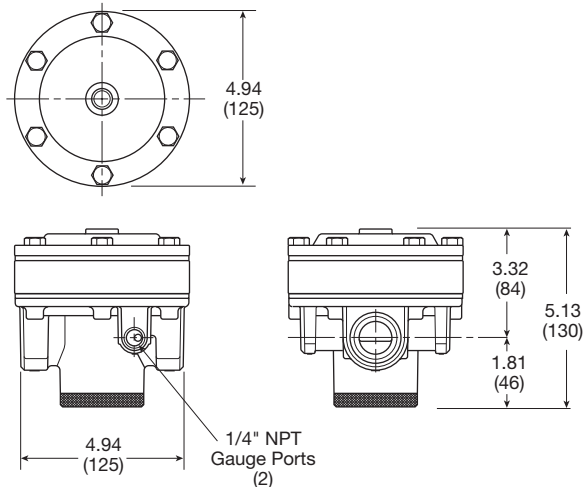
2" dial face 60 psig (0 to 4.1 bar), gauge	K4520N14060
2" dial face 160 psig (0 to 11.0 bar), gauge	K4520N14160
2" dial face 300 psig (0 to 20.7 bar), gauge	K4520N14300
1-3/4" digital round face 160 psig (0 to 11.0 bar), gauge	K4517N14160D
Non-relieving diaphragm, valve assembly (3/4", 1")	RK118X20B
Non-relieving diaphragm, valve assembly (1-1/4", 1-1/2")	RK118X20D
Relieving diaphragm, valve assembly (3/4", 1")	RK119X20B
Relieving diaphragm, valve assembly (1-1/4", 1-1/2")	RK119X20D

For Fluorocarbon Repair Kits, add X64 to Kit Number suffix.

R119-06J, R119-08J



R119-12J

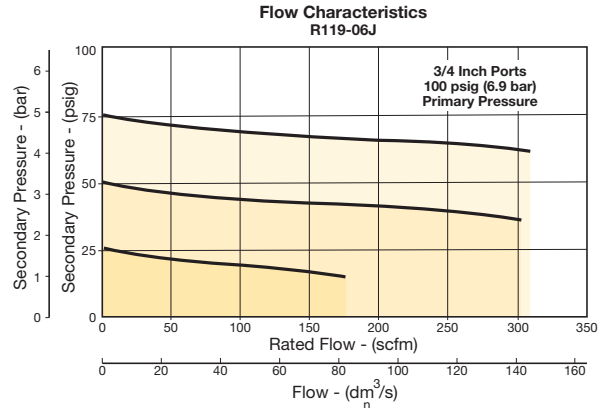


Inches (mm)

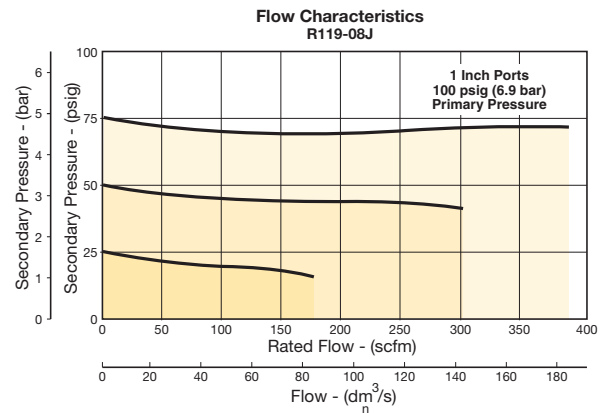
Air Preparation Products Regulator Products

Flow Charts

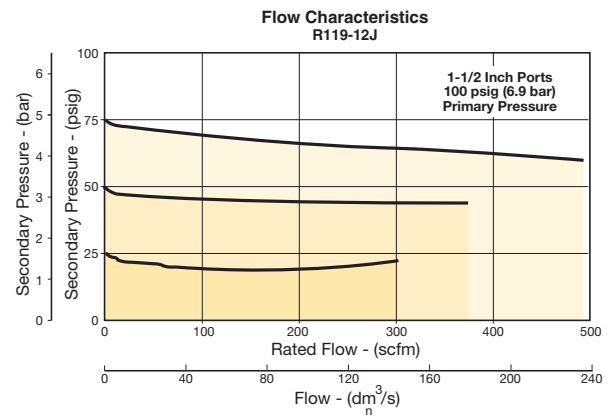
3/4" Regulator



1" Regulator



1-1/2" Regulator



⚠ WARNING

**Product rupture can cause serious injury.
Do not connect regulator to bottled gas.
Do not exceed Maximum primary pressure rating.**

General

Dial

Pilot

Proportional

Precision

Water

K

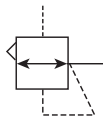
Regulator
Products



For inventory, lead time, and kit lookup, visit www.pdnplu.com

R119 Pilot Operated Regulators - Hi-Flow

- Adapted for control by a remote or distant small pilot regulator. Ideal for maximum capacity requirements in applications where units are not readily accessible
- High flow performance featuring rugged design for the most demanding applications
- Ideal for those installations calling for constant pressure with wide variation in flow
- Piston operated design with balanced poppet and dual constant bleed for quick and accurate regulation
- 2", 2-1/2" ports (NPT, BSPP)



Port size	Description (0-125 psig reduced pressure)	Part number
2"	Without gauge, relieving, NPT	R119-16J
2-1/2"	Without gauge, relieving, NPT	R119-20J

Operating information

Supply pressure (max):	300 psig (0 to 20.7 bar)	
Air consumption:	Air pilot chamber: approx. 0.17 scfm (10 scfh)	
Constant bleed from:	Reduced pressure: approx. 0.17 scfm (10 scfh)	
Operating temperature:	40°F to 120°F (4.4°C to 48.9°C)	
Reduced pressure range:	Adjustable to within 5 to 7 psig (0.34 to 0.48 bar) of supply pressure	
Flow capacity†:		
High flow	2"	1800 scfm (850 dm³/s, ANR)
	2-1/2"	1800 scfm (850 dm³/s, ANR)
Gauge ports (2):		
Can be used for full flow	1/4 inch	
High pressure outlet for pilot	1/4 inch	
Weight:	15 lb (6.8 kg)	

† scfm = Standard cubic feet per minute at 100 psig inlet, 75 psig no flow secondary setting and 20 psig pressure drop.

Ordering information:

R119 - 16 J

Port Threads	Reduced Pressure Range
NPT -	J Air pilot operated
BSPP G	

Port Size	Part Number
2 inch	16
2-1/2 inch	20

NOTE: Non-relieving not available.

Most popular.



For inventory, lead times, and kit lookup, visit www.pdnplu.com

General
Dial
Pilot
Proportional
Precision
Water
K Regulator Products

Hi-Flow Regulators

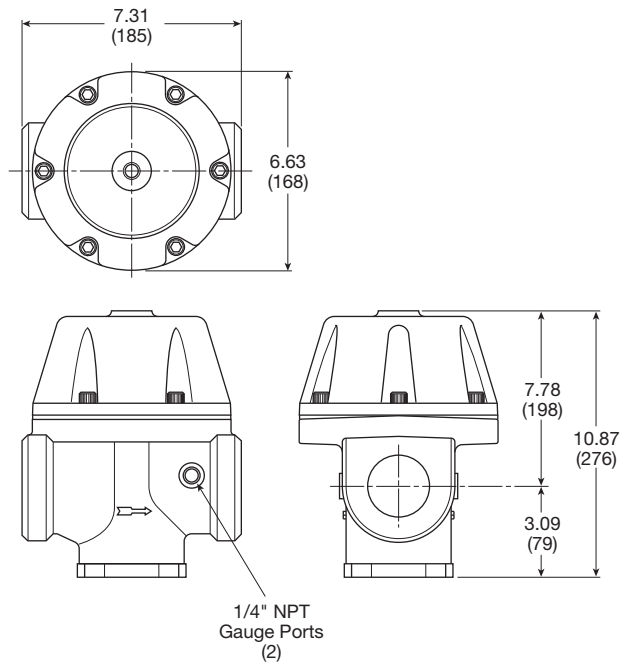
Material Specifications

Body, piston	Aluminum
Seals	Buna N
Innervalve stainless	Brass &

Repair and Service Kits

2" dial face 60 psig (0 to 4.1 bar), gauge	K4520N14060
2" dial face 160 psig (0 to 11.0 bar), gauge	K4520N14160
2" dial face 300 psig (0 to 20.7 bar), gauge	K4520N14300
1-3/4" digital round face	
160 psig (0 to 11.0 bar), gauge	K4517N14160D
Piston type regulation (2", 2-1/2")	RK119G

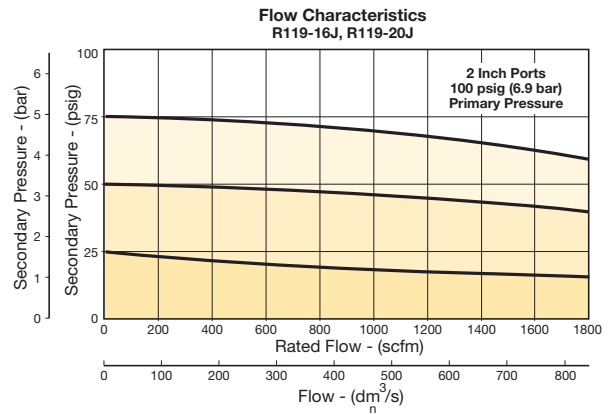
R119-16J, R119-20J



Inches (mm)

Air Preparation Products Regulator Products

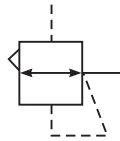
Flow Charts



WARNING
Product rupture can cause serious injury.
Do not connect regulator to bottled gas.
Do not exceed Maximum primary pressure rating.

P3Y Pilot Operated Regulator

- Integral 3/4" or 1" ports (BSPP & NPT)
- Pilot controlled regulators can be mounted "out of reach" with pilot regulator installed in a convenient location
- Constant pilot bleed control for accurate pressure control
- Balanced poppet provides quick response
- High flow



Operating information

Supply pressure (max):	254 psig (17.5 bar)
Operating temperature:	-40°F to 140°F (-40°C to 60°C)
Flow capacity†:	3/4" 550 scfm (259.6 dm³/s, ANR) 1" 550 scfm (259.6 dm³/s, ANR)
Fluid:	Compressed air
Weight:	2.6 lb (1.2 kg)
† Inlet pressure 145 psig (10 bar) inlet pressure, 91.4 psig (6.3 bar) set pressure and 7.3 psig (0.5 bar) pressure drop.	

Port size	Description	Part number
3/4"	Pilot operated regulator	P3YRA96BPPN
1"	Pilot operated regulator	P3YRA98BPPN

Ordering information

P3YRA 9 6 BPPN

Basic series	Thread type*	Port size
Pilot Operated Regulator P3YRA	BSPP 1	3/4 6
	NPT 9	1 8

* Note: For 1-1/2" ported unit, please order P3YKA*BCP port block kit separately.

Most popular.



For inventory, lead times, and kit lookup, visit www.pdnplu.com

K62

Parker Hannifin Corporation
Pneumatic Division
Richland, Michigan
www.parker.com/pneumatics

Pilot Operated Regulators

Material specifications

Body	Aluminium
Body cover	ABS
Valve	Brass / NBR composite
Pilot valve booster	Aluminum
Seals	Nitrile NBR
Screws	Zinc plated steel

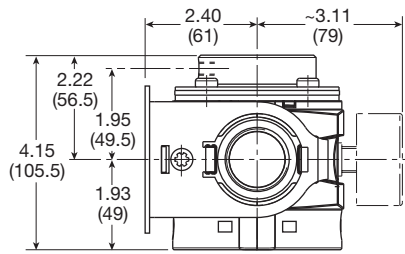
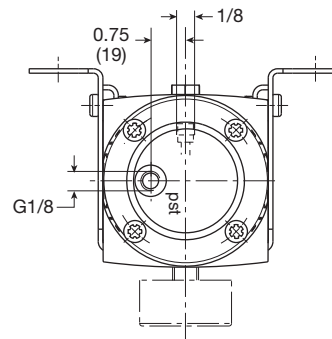
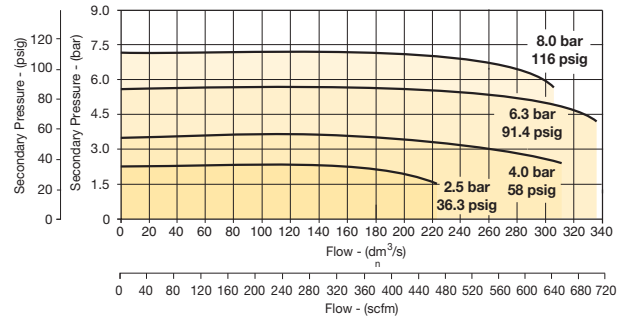
WARNING

**Product rupture can cause serious injury.
Do not connect regulator to bottled gas.
Do not exceed Maximum primary pressure rating.**

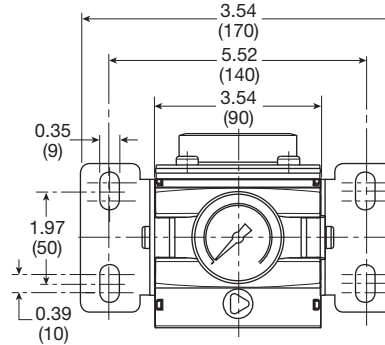
Air Preparation Products Regulator Products

Flow characteristics

3/4" and 1" Pilot Regulator



Inches (mm)



General

Dial

Pilot

Proportional

Precision

Water

K

Regulator Products